

DEPARTMENT OF THE ARMY TECHNICAL MANUAL

Direct Support, General Support and Depot Maintenance Repair Parts

And Special Tools List

COMPRESSOR UNIT, RECIPROCATING, POWER-DRIVEN,

FLAMETHROWER, 3-1/2 CFM, AN-M4B

(STEWART-WARNER MODEL NO. 3260101-4)

(FSN 4310-848-6075)

AND

COMPRESSOR UNIT, RECIPROCATING, POWER-DRIVEN,

FLAMETHROWER, 3-1/2 CFM, AN-M4C

(STEWART-WARNER MODEL NO. 3260101-6)

(FSN 4310-078-5431)

Current as of March 1976

**This copy is a reprint which includes current
page from Change 1.**

HEADQUARTERS, DEPARTMENT OF THE ARMY

AUGUST 1970

CHANGE }
NO. 1 }

HEADQUARTERS
DEPARTMENT OF THE ARMY
WASHINGTON, D.C. 23 September 1976

**Direct Support, General Support and Depot Maintenance Repair Parts
And Special Tools List**

**COMPRESSOR UNIT, RECIPROCATING, POWER-DRIVEN,
FLAMETHROWER, 3-1/2 CFM, AN-M4B
(STEWART-WARNER MODEL NO. 3260101-4)
(FSN 4310-848-6075)**

AND

**COMPRESSOR UNIT, RECIPROCATING, POWER-DRIVEN,
FLAMETHROWER, 3-1/2 CFM, AN-M4C
(STEWART-WARNER MODEL NO. 3260101-6)
(FSN 4310-078-5431)**

Current as of March 1976

TM 3-1040-244-35P, 5 August 1970, is changed as follows:

The title and FSNs in this manual are changed as shown above.

Page 1. SECTION II Group 200 change title "Moisture Separator" to "Water Separator". Group 300 change title to "Compressor Assembly."

Page 5. Paragraph 8 is superseded as follows:

8. Recommendations for Maintenance Publications Improvements

You can improve this manual by recommending improvements using DA Form 2028 (Recommended Changes to Publications and Blank forms) or a letter and mailing direct to Commander, Edgewood Arsenal ATTN: SAREA-DE-ET, Aberdeen Proving Ground, MD 21010. A reply will be furnished direct to you.

Page 6, column (2). Change FSN "5310-849-7733" to FSN "5310-880-5977."

Page 7. GROUP 200, change "MOISTURE SEPARATOR" to "WATER SEPARATOR."

Page 7, column (2). Change FSN "5305-043-6749" to FSN "5305-989-6265." Column (3) change "MS3522662" to "MS35226-262."

Page 8, column (1), line 3 Change "P" code to "MF." Column (2), line 2, delete FSN "4720-788-0901." Column (3), line 12, delete reference number "3260551 (78385)" and add "manufactured from 4710-2775525."

Page 8, column (5), line 7. Change "3" to "2."

Page 9, line 1. Delete in entirety.

Page 11. GROUP 300, change title to "COMPRESSOR ASSEMBLY."

Page 13, column (1), line 3. Change code "P" to

"XB," column (2), line 3, change FSN "1040-906-7901" to FSN "4310-906-7905."

Page 14, column (3), line 4 Change "MS3526-69" to "MS35265-69."

Page 15, column (2), line 5: Change FSN "5340-989-6774" to FSN "5360-989-6774."

Page 18, column (3), line 23. "MSS5310-6 (08288)" change to "50FK420 (56878)."

Page 19, column (2), line 3. FSN "5340-989-6775" change to FSN "5360-989-6775."

Page 21, column (2), line 5. FSN "5330-999-0677" change to "5330-988-8809."

Page 22, column (3), line 15. Add reference number "50FK420 (56878)." Column (2), line 8. FSN "5340804-6855" change to FSN "5365-804-6855."

Page 23, column (2), line 2. FSN "4310-790-0985" change to FSN "1620-790-0985."

Page 25, column (2), line 1. FSN "3110-227-3181" change to "FSN 3110-807-3181." Column (3), line 13, delete "aluminum alloy sheet, .090 thickness type 60610, QQ-A-250/11 FSN 9535-232-0321." Add "FSN 9515-825-4238 cres. .010 thk QQ-S-766 (81348)."

Page 26, column (1), line 1. "Code P" change to "XA." Column (2), lines 1 and 2, delete FSN "4310906-1008" and FSN "43104980-0664." Column (1), line 3, change code "H" to "0". Column (3), line 10, "MS203641032A" change to "MS20364-1032A."

Page 28, column (2) line 6 "FSN 3020-971-1366" change to "FSN 2990-971-1306."

Page 29, column (2) line 5 "FSN 1040-971-4920" change to FSN "5340-971-4920." Column (2), line 6. FSN "5305-043-6749" change to FSN "5305-9896265." Column (3), line 18, MS35226-62" change to "MS35226-262."

Page 30, column (3), line 17. "500592 (10001) " change to "428-0323 (78385)."

Page 31, column (1), line 1. Code "H" change to "F." Column (3), line 3, "CAGE, PROTECTING" change to "FRAME TOP." Column (2), line 2. FSN "1040-763-3254" change to FSN "9905-763-254." Column (3), line 7, reference number "4340233" change to "4340172." Column (2), line 3. FSN "5305-043-6749" change to FSN "5305-989-6265." Column (3), line 11, "MS35226-62" change to "MS 35226-262."

Page 33, column (3), lines 4 and 5. "FRAME, ENGINE MOUNTING, 4407-0058 (78385) " change to "FRAME, BOTTOM E68-13-1590 (81361)." Columns 7(a), (b), (c), 8 and 9. Remove "REF" and add "."

Page 34, column (1), line 3 "Code P" change to "XB." Column (2), line 2, delete FSN "4030-956-

6126." Add the following parts to GROUP 500 - FRAME AND FUEL TANK.

Page 36, Add the following kit to GROUP 600 - REPAIR KITS:

	Column (4)	Column (5)		
P-H-4310-574-7708	KIT, DISK, RUPTURE 408-0236 (78385)		ea	1
	C/O		Fig	Item
	1 EA RETAINER 130B2746(78385)		6	1
	1 EA RING, DISK 2740251(78385)		6	2

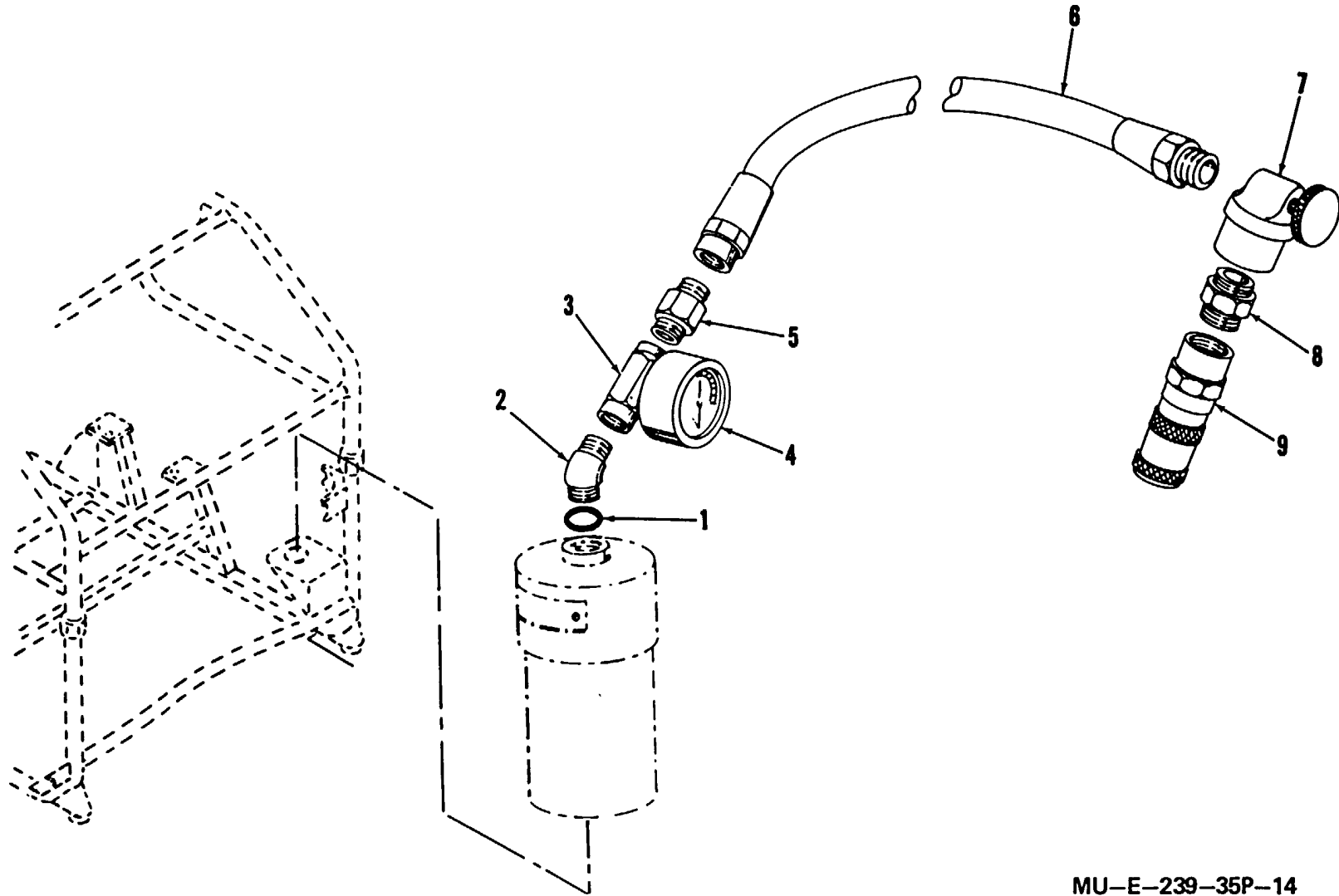
Page 37, figure 2, Delete items 11 and 12.

Page 47. Add figure 14.

(1) SMR CODE	(2) FEDERAL STOCK NUMBER	(3) DESCRIPTION Reference Number & Mfr. Code Usable on Code		(4) UNIT OF MEAS	(5) QTY INC IN UNIT	(6) 30-DAY DS MAINT. ALLOWANCE			(7) 30-DAY GS MAINT. ALLOWANCE			(8) 1 YR ALW PER 100 EQUIP CNTGCTY	(9) DEPOT MAINT. ALW PER 100 EQUIP.	(10) ILLUSTRATION	
						(A) 1-20	(B) 21-50	(C) 51-100	(A) 1-20	(B) 21-50	(C) 51-100			(a) FIGURE NO.	(b) ITEM NO.
N P O	5330-805-2966	GROUP 500 - Continued CHARGING HOSE PACKING, PREFORMED MS28778-4 (96906)		EA	1	*	*	*	*	*	*	*	*	14	1
N P O	4730-933-0723	ELBOW, TUBE TO BOSS MS51528-A4 (96906)		EA	1	*	*	*	*	*	*	*	*	14	2
N P O	4730-084-0435	TEE, PIPE TO TUBE B68-13-1553 (81361)		EA	1	*	*	*	*	*	*	*	*	14	3
N P O	6685-087-6925	GAGE, PRESSURE DIAL INDICATING 21-25DFM 1-4 CBM 3000 (38508)		EA	1	*	*	*	*	*	*	*	*	14	4
N P O	4730-618-3410	ADAPTER B81-3-30 (81361)		EA	1	*	*	*	*	*	*	*	*	14	5
N P O	4720-289-2630	HOSE ASSEMBLY, NONMETALLIC B81-3-65 (81361)		EA	1	*	*	*	*	*	*	*	*	14	6
N P O	1040-759-7352	VALVE ASSEMBLY C81-6-407 (81361)		EA	1	*	*	*	*	*	*	*	*	14	7
N P O	4730-851-2278	ADAPTER, STRAIGHT, PIPE TO TUBE B81-6-384 (81361)		EA	1	*	*	*	*	*	*	*	*	14	8
N P O	4730-863-0774	COUPLING HALF, QUICK DISCONNECT 2AEF2 (95138)		EA	1	*	*	*	*	*	*	*	*	14	9

SMUEA-TS Form 21
Rev 1 Dec 67

Replaces SMUEA-TS Form 21, 15 Jun 67, which is obsolete.



MU-E-239-35P-14

Figure 14. Charging hose.

**Section IV. INDEX - FEDERAL STOCK NUMBER AND REFERENCE NUMBER
CROSS-REFERENCE TO FIGURE AND ITEM NUMBER**

<u>Stock Number</u>	<u>Figure No.</u>	<u>Item No.</u>	<u>Stock Number</u>	<u>Figure No.</u>	<u>Item No.</u>
1040-076-8849	9	2	1040-906-7905	7	13
1040-081-8079	13	15	1040-906-7906	7	14
1040-083-2606	1	1	1040-906-7909	4	16
1040-083-2607	1	3	1040-921-5291	13	1
1040-083-2608	1	9	1040-921-5294	7	17
1040-083-2614	1	7	1040-921-5295	10	7
1040-083-2617	3	5	1040-921-5296	10	6
1040-084-0436	12	6	1040-921-5297	12	9
1040-084-0438	2	16	1040-921-5298	13	13
1040-727-3731	4	11	1040-921-5299	3	4
1040-759-3895	9	9	1040-921-5300	3	9
1040-759-7352	14	7	1040-921-5301	10	1
1040-759-9767	9	4	1040-971-4921	11	9
1040-764-5948	5	6	1040-976-8980	13	26
1040-764-5949	5	2	1040-994-7985	13	9
1040-784-7455	4	12	1270-830-2836	3 6	3 3
1040-788-5373	4	4			
1040-788-5374	KIT	-	1620-790-0985	8	24
1040-863-7451	1	4	2805-068-7510	11	5
1040-906-7899	2	14	2805-759-3894	9	16
1040-906-7902	9	8	2910-912-9485	13	9

**Section IV. INDEX - FEDERAL STOCK NUMBER AND REFERENCE NUMBER
CROSS-REFERENCE TO FIGURE AND ITEM NUMBER**

<u>Stock Number</u>	<u>Figure No.</u>	<u>Item No.</u>	<u>Stock Number</u>	<u>Figure No.</u>	<u>Item No.</u>
2990-971-1366	11	6	4310-979-9295	6	22
3110-100-2394	9	7	4310-979-9296	7	19
3110-807-3181	9	11	4310-979-9299	KIT	-
3110-902-3397	9	11	4310-979-9300	KIT	-
3110-902-3398	9	7	4310-979-9301	KIT	-
3120-993-0093	4	13	4310-983-3072	4	5
4010-958-0633	13	23	4310-983-3075	7	8
4020-233-6555	1	8	4310-983-3076	6	7
4030-063-3979	13	25	4310-986-7764	6	21
4310-574-7708	KIT	-	4310-986-7766	4	14
4310-727-3736	8	20	4310-986-7767	8	16
4310-728-5126	4	3	4310-992-5746	9	8
4310-790-0954	8	9	4330-773-1216	5	5
4310-792-1491	5	1	4720-062-4332	12	7
4310-906-7901	4	15	4720-289-2630	14	6
4310-979-9284	6	6	4730-084-0435	14	3
4310-979-9287	8	15	4730-088-8520	6	20
4310-979-9288	8	14	4730-186-9997	7	18
4310-979-9289	8	13	4730-197-2916	6	7
				8	1
4310-979-9294	8	11			

**Section IV. INDEX - FEDERAL STOCK NUMBER AND REFERENCE NUMBER
CROSS-REFERENCE TO FIGURE AND ITEM NUMBER**

<u>Stock Number</u>	<u>Figure No.</u>	<u>Item No.</u>	<u>Stock Number</u>	<u>Figure No.</u>	<u>Item No.</u>
4730-231-3026	2	20	5305-614-0246	10	11
4730-277-5083	6	8	5305-614-3423	4	8
	7	9			
	8	2	5305-806-1800	8	18
4730-277-6372	2	9	5305-842-5646	4	20
4730-287-0092	10	3	5305-889-3002	4	1
				9	12
4730-289-3070	13	12	5305-939-9190	11	1
4730-618-3410	14	5	5305-984-6211	10	5
4730-788-0902	2	8	5305-989-6265	2	2
4730-851-2278	14	8		12	1
				13	3
4730-863-0774	14	9	5305-984-6215	8	6
4730-908-6292	2	15	5305-993-2459	13	17
4730-933-0723	14	2	5306-064-8407	11	10
4730-979-9281	7	17	5306-559-0474	9	13
4730-979-9296	7	19	5306-754-1787	2	4
4820-068-5052	2	17	5306-879-2800	1	2
4820-254-8640	12	8	5306-899-3002	9	12
4820-907-3448	2	13	5306-964-9603	4	9
5305-068-0500	11	7	5306-999-0488	4	17
5305-068-0507	13	20	5310-012-0379	9	14
5305-253-5609	9	3	5310-061-7325	13	16

**Section IV. INDEX - FEDERAL STOCK NUMBER AND REFERENCE NUMBER
CROSS-REFERENCE TO FIGURE AND ITEM NUMBER**

<u>Stock Number</u>	<u>Figure No.</u>	<u>Item No.</u>	<u>Stock Number</u>	<u>Figure No.</u>	<u>Item No.</u>
5310-183-4406	8	8	5310-809-8546	13	4
5310-186-4947	2	10	5310-877-5796	1 13	6 10
5310-194-0637	13	18	5310-880-5977	1	5
5310-209-0786	11	8	5310-934-9751	12	4
5310-270-8810	5 11	3 4	5315-727-1636	8	25
5310-275-3683	3	4	5315-788-5372	9	10
5310-282-7834	2	18	5320-999-0397	13	14
5310-543-5933	11	3	5330-171-5099	3	2
5310-550-9449	6 7 8 9	11 12 19 1	5330-186-1295	6 7 8	9 8 3
5310-559-0070	4 4	2 7	5330-263-8028	2	9
5310-576-5752	4 5 8 12	19 4 7 3	5330-263-8030	12	5
5310-596-7691	2	3	5330-263-8031	13	11
5310-596-7957	2 8 10 13	6 5 2 7	5330-265-1075	13	24
5310-616-3056	2	19	5330-582-7289	10	4
5310-788-0900	4	10	5330-727-2240	8	17
			5330-788-0906	3	3
			5330-788-0907	8	23
			5330-805-2966	14	1
			5330-988-8808	7	16

**Section IV. INDEX - FEDERAL STOCK NUMBER AND REFERENCE NUMBER
CROSS-REFERENCE TO FIGURE AND ITEM NUMBER**

<u>Stock Number</u>	<u>Figure No.</u>	<u>Item No.</u>	<u>Stock Number</u>	<u>Figure No.</u>	<u>Item No.</u>
5330-988-8809	8	10	5340-769-5311	4	6
5330-993-0084	9	6	5340-971-4920	11	11
5330-993-0085	9	17	5340-977-7247	13	19
5330-999-0462	13	5	5360-989-6774	6	5
5330-999-0478	7	15	5360-989-6775	7	14
5340-079-7837	12	2	5360-989-6776	8	12
5340-205-6301	2	1	6685-087-6925	14	4
5340-282-8335	13	6	7690-728-5129	3	7
5340-285-7010	4	18	9515-825-4238	9	15
5340-597-9408	13	8	9905-763-3254	13	2

**Section IV. INDEX - FEDERAL STOCK NUMBER AND REFERENCE NUMBER
CROSS-REFERENCE TO FIGURE AND ITEM NUMBER**

<u>Reference No.</u>	<u>Mfg Code</u>	<u>Fig No.</u>	<u>Item No.</u>	<u>Reference No.</u>	<u>Mfg Code</u>	<u>Fig No.</u>	<u>Item No.</u>
A68-13-1523	81361	13	19	B68-13-1560	81361	13	26
A68-13-1528	81361	11	10	B68-13-1566	81361	12	6
A81-1-882	81361	13	22	B68-13-1567	81361	2	16
AN381-2-10	88044	6	14	B81-1-526	81361	13	25
		7	7				
AN381-15-16	88044	6	15	B81-1-6878	81361	1	2
		7	5	B81-3-30	81361	14	5
AN6246-1	88044	7	10	B81-3-65	81361	14	6
AN6289D6	88044	6	8	B81-6-384	81361	14	8
		8	2				
AN6289-4	88044	2	9	C68-13-1572	81361	11	2
AN814-5D	88044	10	3	C81-6-407	81361	14	7
AN833-4	88044	2	20	D68-13-1551	81361	1	1
AN833-6D	88044	6	7	D68-13-1570	81361	1	7
		8	1	D81-1-6869-1	81361	1	3
AN837-6D	88044	7	18	D81-1-6872-1	81361	1	9
AN924-10D	88044	2	18	D81-1-6876	81361	1	4
AN960PD10	88044	8	8	E68-13-1587	81361	13	1
B68-13-1532	81361	11	6	LP20074-03-03	03038	4	17
B68-13-1540	81361	11	11	MIL-C-271	81349	13	23
B68-13-1541	81361	11	9	MIL-C-2533	81349	1	8
B68-13-1553	81361	14	3	MS134355	96906	10	15

**Section IV. INDEX - FEDERAL STOCK NUMBER AND REFERENCE NUMBER
CROSS-REFERENCE TO FIGURE AND ITEM NUMBER**

<u>Reference No.</u>	<u>Mfg Code</u>	<u>Fig No.</u>	<u>Item No.</u>	<u>Reference No.</u>	<u>Mfg Code</u>	<u>Fig No.</u>	<u>Item No.</u>
MS15795-311	96906	1	5	MS29513-218	96906	13	24
MS16625-4037	96906	8	21	MS29561-013	96906	10	9
MS20074-03-03	96906	2	4	MS29561-127	96906	8	10
MS20364-1032A	96906	2	6	MS29561-217	96906	7	16
		8	5	MS29561-229	96906	8	17
		13	7				
MS21044N4	96906	1	6	MS35206-242	96906	4	1
		13	10				
				MS35206-264	96906	10	5
MS21045-4	96906	13	16	MS35206-268	96906	8	6
MS21318-13	96906	9	3	MS35207-283	96906	13	17
MS21333-67	96906	12	2	MS35226-262	96906	2	2
MS21919D-4	96906	2	1			12	1
						13	3
MS21919F8	96906	13	6	MS35265-43	96906	4	8
MS21919F10	96906	13	8	M35265-69	96906	4	20
MS27183-8	96906	13	4	MS35266-63	96906	10	11
MS28777-4	96906	2	10	MS35275-265	96906	11	1
MS28777-6	96906	6	9	MS35292-32	96906	9	13
		8	3				
MS28778-4	96906	14	1	MS35333-38	96906	4	2
						4	7
MS29512-04	96906	2	11	MS35333-39	96906	4	19
MS29512-08	96906	13	11			5	4
						8	7
MS29512-6	96906	12	5			12	3

**Section IV. INDEX - FEDERAL STOCK NUMBER AND REFERENCE NUMBER
CROSS-REFERENCE TO FIGURE AND ITEM NUMBER**

<u>Reference No.</u>	<u>Mfg Code</u>	<u>Fig No.</u>	<u>Item No.</u>	<u>Reference No.</u>	<u>Mfg Code</u>	<u>Fig No.</u>	<u>Item No.</u>
MS35333-73	96906	11	3	QQ-A-250/11	81348	2	5
MS35335-13	96906	11	8	QQ-S-766	81348	9	15
MS35335-32	96906	2	3	WW-T-775	81348	2	7
MS35335-40	96906	3	4	1-AO-8-111	88408	11	5
MS35335-41	96906	2	19	116-B100-14	78385	2	13
MS35337-26	96906	9	14	11681-81N	30327	12	9
MS35650-104	96906	5 11	3 4	130A0456	78385	10	4
MS35650-302	96906	12	4	130A457	57733	6 7 8	10 11 4
MS53842-14	96906	2	15	130B2746	78385	6	1
MS51528-A4	96906	14	2	130B1136	78385	6	21
MS9015-08	96906	13	12	1481206	80201	9	17
MS90725-3	96906	11	7	1483006	80201	9	6
MS90726-7	96906	13	20	2AEF2	95138	14	9
MS9320-10	96906	13	18	21-25DFM1-4	38508	14	4
NAS1305-26H	80205	9	12	CBM 3000			
PA821-0604	92033	2	8	2740251	78385	6	2
Q3L05X3A	43334	9	7	274103	78385	6	3
Q3L06X3A	43334	9	11	305	28986	2	17
Q8279	78385	6 7	19 20	3260100-4	78385	4	15

**Section IV. INDEX - FEDERAL STOCK NUMBER AND REFERENCE NUMBER
CROSS-REFERENCE TO FIGURE AND ITEM NUMBER**

<u>Reference No.</u>	<u>Mfg Code</u>	<u>Fig No.</u>	<u>Item No.</u>	<u>Reference No.</u>	<u>Mfg Code</u>	<u>Fig No.</u>	<u>Item No.</u>
3260123	78385	9	8	3260159	78385	7	17
3260124	78385	4	9	3260161	78385	7	14
3260125	78385	4	13	3260162	57733	6 7	16 1
3260127	78385	9	9	3260163	57733	6 7	17 2
3260128	78385	7	3	3260164	78385	8	15
3260129	78385	6	18	3260165	78385	8	16
3260130	78385	6 7	13 6	3260167	78385	5	5
3260132	78385	4	14	3260168	57733	9	10
3260133	78385	6 7	12 4	3260169	78385	7	8
3260135	78385	8	9	3260170	78385	6	22
3260139	78385	8	24	3260179	78385	6	7
3260142	78385	8	20	3260185	78385	4	6
3260143	78385	8	23	3260188	57733	9	5
3260144	57733	8	22	3260220	78385	9	16
3260146	78385	8	14	3260240	78385	9	18
3260147	78385	8	11	3260243	78385	4	12
3260148	78385	6	5	3260265	78385	10	13
3260149	78385	8	13	3260266	78385	10	17
3260153	78385	8	25	3260267	78385	10	8

**Section IV. INDEX - FEDERAL STOCK NUMBER AND REFERENCE NUMBER
CROSS-REFERENCE TO FIGURE AND ITEM NUMBER**

<u>Reference No.</u>	<u>Mfg Code</u>	<u>Fig No.</u>	<u>Item No.</u>	<u>Reference No.</u>	<u>Mfg Code</u>	<u>Fig No.</u>	<u>Item No.</u>
3260281	78385	9	4	412-0093	78385	9	8
3260299	78385	9	2	425-0124	78385	7	14
3260390	78385	4	3	428-0323	78385	12	9
3260391	78385	3	7	434-0167	78385	13	15
3260424	78385	5	1	434-0172	78385	13	2
3260548	57733	4	4	434-0230	78385	13	15
3260551	78385	2	7	4407-0058	78385	13	13
3260556	78385	10	12	4408-0054	78385	7	17
3260566	78385	10	10	4417-0013	78385	9	18
3260569	78385	10	14	4421-0021	78385	7	19
3590175	78385	4	11	4428-0167	78385	4	16
3750231	78385	6	20	4455-0017	18385	10	1
3750345	78385	4	5	4455-0020	78385	5	2
3800178	78385	6	4	4455-0021	78385	5	6
3800195	78385	6	6	4457-0010	78385	13	9
3800196	78385	8	12	4457-0016	78385	13	9
3811000	78385	2	14	448-0480	78385	10	16
3811021	78385	3	6	448-0483	78385	7	15
3811022	78385	3	1	448-0507	78385	13	5
407-0271	78385	13	21	457-0023	78385	10	6

**Section IV. INDEX - FEDERAL STOCK NUMBER AND REFERENCE NUMBER
CROSS-REFERENCE TO FIGURE AND ITEM NUMBER**

<u>Reference No.</u>	<u>Mfg Code</u>	<u>Fig No.</u>	<u>Item No.</u>	<u>Reference No.</u>	<u>Mfg Code</u>	<u>Fig No.</u>	<u>Item No.</u>
465-0118	78385	7	13	628-0015	78385	12	8
48A113	78385	3	3	628-0041	78385	10	7
50FK420	56878	6	11	6480042-1	78385	13	14
		7	12	742d6	88044	4	18
		8	19				
		9	1				
52TE126	78926	4	10	803831	33525	12	7
614-0014	78385	9	7	8599621-330	99974	8	18
614-0015	78385	9	11	873561	33525	3	5

By Order of the Secretary of the Army:

Official:

FRED C. WEYAND
General, United States Army
Chief of Staff

PAUL T. SMITH
Major General, United States Army
The Adjutant General

DISTRIBUTION:

To be distributed in accordance with DA Form 12-28, Direct and General Support maintenance requirements for Flamethrowers, Service Unit Compressors.

TECHNICAL MANUAL }
 No. 3-1040-244-35P }

HEADQUARTERS
 DEPARTMENT OF THE ARMY
 WASHINGTON, D. C., 5 August 1970

**Direct Support, General Support and Depot Maintenance Repair Parts
 And Special Tools List
 COMPRESSOR UNIT, RECIPROCATING, POWER-DRIVEN,
 FLAMETHROWER, 3-1/2 CFM, AN-M4B
 (STEWART-WARNER MODEL NO. 3260101-4)
 (FSN 4310-848-6075)
 AND
 COMPRESSOR UNIT, RECIPROCATING, POWER-DRIVEN,
 FLAMETHROWER, 3-1/2 CFM, AN-M4C
 (STEWART-WARNER MODEL NO. 3260101-6)
 (FSN 4310-078-5431)
 Current as of March 1976**

	<i>Paragraph</i>	<i>Page</i>
SECTION I. INTRODUCTION		
Scope	1	2
General	2	2
Explanation of Columns	3	2
Special Information	4	4
How to Locate Repair Parts	5	4
Abbreviations	6	4
Federal Supply Codes for Manufacturers	7	4
Recommendations for Maintenance Publication Improvements	8	5
II. REPAIR PARTS FOR DIRECT SUPPORT, GENERAL SUPPORT, AND DEPOT MAINTENANCE	---	6
Group 100. Canvas	---	6
Group 200. Water Separator	---	7
Group 300. Compressor Assembly	---	11
Group 400. Engine	---	28
Group 500. Frame and Fuel Tank	---	31
Group 600. Repair Kits	---	35
SECTION III SPECIAL TOOLS, TEST AND SUPPORT EQUIPMENT (NOT APPLICABLE)		

LIST OF ILLUSTRATIONS

<i>No.</i>	<i>Title</i>	<i>Page</i>
1	Cover assembly	37
2	Moisture separator	37
3	Separator section	37
4	Fan, aftercooler, and basic compressor	38
5	Air intake filter	39
6	Thirdstage	40
7	Second stage	41
8	First stage	42
9	Endbell connecting rod and shaft	43
10	Oil reservoir and breather	44
11	Engine and mounting bracket	45
12	Engine accessories	46
13	Frame and fuel tank	47

SECTION IV. FEDERAL STOCK NUMBER AND REFERENCE NUMBER INDEX	48
--	----

*This manual supersedes TM 3-14224-35P, August 19, and TM 3-1040-2435P, January 19.

SECTION I

INTRODUCTION

1. Scope

This manual lists repair parts, special tools, and special purpose test equipment required for the performance of direct support, general support, and depot maintenance of the AN-M4B and ANM4C Compressors.

2. General

This repair parts and special tools list is divided into the following sections:

a. Repair Parts – Section II. A list of repair parts authorized for the performance of maintenance at the direct support, general support, and depot level in figure and item number sequence.

b. Special Tools, Test and Support Equipment – Section III. Not applicable.

c. Federal Stock Number and Reference Number Index – Section IV. A list of Federal stock numbers in ascending numerical sequence followed by a list of reference numbers in ascending alphanumeric sequence, cross-referenced to the illustration figure number and item number.

3. Explanation of Columns

The following provides an explanation of columns in the tabular lists in Sections II and IV:

a. Source, Maintenance and Recoverability Codes (SMR) Column.

(1) Source code indicates the selection status and source for the listed item. Source codes used are:

<i>Code</i>	<i>Explanation</i>
P	Repair parts, special tools, and test equipment supplied from the GSA/DSA, or Army supply system, and authorized for use at indicated maintenance categories.
P2	Repair parts, special tools, and test equipment which are procured and stocked for insurance purposes because the combat or military essentiality of the end item dictates that a minimum quantity be available in the supply system.
P9	Assigned to items which are NSA design controlled: unique repair parts, special tools, test, measuring, and diagnostic equipment, which are stocked and supplied by the Army COMSEC Logistic System and

<i>Code</i>	<i>Explanation</i>
	which are not subject to the provisions of AR 380-41.
P10	Assigned to items which are NSA design controlled: special tools, test, measuring, and diagnostic equipment for COMSEC support, which are accountable under the provisions of AR 380-41, and which are stocked and supplied by the Army COMSEC Logistic System.
M	Repair parts, special tools, and test equipment which are not procured or stocked, as such, in the supply system but are to be manufactured at indicated maintenance levels.
A	Assemblies which are not procured or stocked as such, but are made up of two or more units. Such component units carry individual stock numbers and descriptions, are procured and stocked separately and can be assembled to form the required assembly at indicated maintenance categories.
X	Parts and assemblies that are not procured or stocked because the failure rate is normally below that of the applicable end item or component. The failure of such part or assembly should result in retirement of the end item from the supply system.
X1	Repair parts which are not procured or stocked. The requirement for such items will be filled by the next higher assembly or component.
X2	Repair parts, special tools, and test equipment which are not stocked and have no foreseen mortality. The indicated maintenance category requiring such repair parts will attempt to obtain the parts through cannibalization or salvage, the item may be requisitioned with exception data, from the end item manager, for immediate use.
G	Major assemblies that are procured with PEMA funds for initial issue only as exchange assemblies at DS and GS level. These assemblies will not be stocked above the DS and GS level or returned to depot supply level.

NOTE

Cannibalization or salvage may be used as a source of supply for any items source coded above except the coded XI.

(2) Maintenance code indicates the lowest category of maintenance authorized to install the listed item. The maintenance level codes are:

Code	Explanation
C -----	Crew/operator Maintenance
O -----	Organizational Maintenance
F -----	Direct Support Maintenance
H -----	General Support Maintenance
D -----	Depot Maintenance

(3) Recoverability code indicates whether unserviceability items should be returned for recovery or salvage. Items not coded are expendable. Recoverability codes are:

Code	Explanation
R	Applied to repair parts, (assemblies and components), special tools, and test equipment which are considered economically repairable at direct and general support maintenance levels. When the item is no longer economically repairable, it is normally disposed of at the GS level. When supply considerations dictate, some of these repair parts may be listed for automatic return to supply for depot level repair as set forth in AR 710-50. When so listed, they will be replaced by supply on an exchange basis.
S	Repair parts, special tools, test equipment, and assemblies which are economically repairable at DSU and GSU activities and which normally are furnished by supply on an exchange basis. When items are determined by a GSU to be uneconomically repairable, they will be evacuated to a depot for evaluation and analysis before final disposition.
T	Higher dollar value recoverable repair parts, special tools, and test equipment which are subject to special handling and are issued on an exchange basis. Such items will be repaired or overhauled at depot maintenance activities only. No repair may be accomplished at lower levels.
U	Repair parts, special tools, and test equipment specifically selected for salvage by reclamation units because of precious metal content, critical materials, high dollar value, or reusable casings or castings.

b. Federal Stock Number Column. This column indicates the Federal stock number assigned to the item and will be used for requisitioning purposes.

c. Description Column. This column indicates the Federal item name and any additional description of the item required. A part number or other reference number is followed by the applicable five-digit Federal supply code for manufacturers in parentheses. Repair parts quantities included in the kits, sets, and assemblies are shown in front of the repair part name. Material required for manufacture or fabrication is identified.

d. Unit of Measure (U/M) Column. A 2 character alphabetic abbreviation indicating the amount or quantity of the item upon which the allowances are based, e.g., ft, ea, pr, etc.

e. Quantity Incorporated in Unit Column.

This column indicates the quantity of the item used in the functional group.

f. 30-day DS/GS Maintenance Allowance Column.

NOTE

Allowances in GS column are for GS maintenance only.

(1) The allowance columns are divided into three subcolumns. Indicates in each subcolumn, opposite the first appearance of each item, is the total quantity of items authorized for the number of equipments supported. Subsequent appearance of the same item will have the letters "REF" in the applicable allowances column. Items authorized for use as required but not for initial stockage are identified with an asterisk in the allowance column.

(2) The quantitative allowances for DS/GS levels of maintenance will represent initial stockage for a 30-day period for the number of equipments supported.

(3) Determination of the total quantity of parts required for maintenance of more than 100 of these equipments can be accomplished by converting the equipment quantity to a decimal factor by placing a decimal point before the next to digit of the number to indicate hundredths, and multiplying the decimal factor by the parts quantity authorized in the 51-100 allowance column. *Example,* authorized allowance for 51-100 equipments is 40; for 150 equipments multiply 40 by 1.50 or 60 parts required.

g. 1-Year Allowances Per 100 Equipments/Contingency Planning Purposes Column. This column indicates opposite the first appearance of each item the total quantity required for distribution and contingency planning purposes. The range of items indicates total quantities of all authorized items required to provide for adequate support of 100 equipments for one year.

h. Depot Maintenance Allowance Per 100 Equipments Column. This column indicates opposite the first appearance of each item, the total quantity authorized for depot maintenance of 100 equipments. Subsequent appearances of the same item will have the letters "REF" in the allowance column. Items authorized for use but not for initial stockage are identified with an asterisk in the allowance column.

i. Illustration Column. This column is divided as follows:

(1) Figure number column indicates the figure number of the illustration in which the item is shown.

(2) Item number column indicates the callout number used to reference the item in the illustration.

4. Special information

a. Parts which require manufacture or assembly at a category higher than that authorized for installation will indicate in the source column the higher category.

b. Identifications of the usable on codes include in column 3 of this publication are: Items that can be used on either model will not show a code.

<i>Code</i>	<i>Used On</i>
A-----	AN-M4C (3260101-6)
B-----	AN-M4B (3260101-4)

c. The following publications pertain to the AN-M4B and AN-M4C Compressors (Stewart-Warner Model Nos. 3260101-4 and 3260101-6).

TM 3-1040-224-12	Operator and Organizational Maintenance Manual (AN-M4B)
TM 3-1040-224-34	Direct Support General Support, Maintenance Manual (AN-M4B)
TM 3-1040-244-12	Operator and Organizational Maintenance Manual (AN-M4C)
TM 3-1040-244-20P	Organizational Maintenance Repair Parts and Special Tools List (AN-M4C)
TM 3-1040-244-34	Direct Support General Support, Maintenance Manual (AN-M4C)

5. How to Locate Repair Parts

a. When Federal stock number or reference number is unknown:

(1) *First.* Using the Table of Contents, determine the functional group, i.e., moisture separator group, frame and fuel tank group, etc, within which the repair part belongs. This is necessary since illustrations are prepared for functional group of functional subgroups and listings are divided into the same groups.

(2) *Second.* Find the illustration covering the functional group or functional subgroup to which the repair part belongs.

(3) *Third.* Identify the repair part on the illustration and note the illustration figure and Item number of the repair part.

(4) *Fourth.* Using the Repair Part Listing, find the functional group or functional subgroup

to which the repair part belongs and locate the illustration figure and item number noted on the illustration.

b. When Federal stock number or reference number is known:

(1) *First.* Using the Index of Federal Stock Numbers and Reference Numbers, find the pertinent Federal stock number or reference number. This index is in ascending FSN sequence followed by a list of reference numbers in ascending alphanumeric sequence, cross-referenced to the illustration figure number and item number.

(2) *Second.* Using the Repair Part Listing, find the functional group or functional subgroup of the repair part and the illustration figure number and item number referenced in the index of Federal Stock Numbers and Reference Numbers.

6. Abbreviations

<i>Abbreviation</i>	<i>Explanation</i>
al-----	aluminum
a/r-----	as required
cfm-----	cubic feet per minute
c/o-----	consisting of
crs-----	corrosion resistant steel
dia-----	diameter
ext-----	external
h-----	high
hd-----	head
hex-----	hexagon
id-----	inside diameter
int-----	internal
lg-----	long
mm-----	millimeter
o/a-----	overall
od-----	outside diameter
pltd-----	plated
stl-----	steel
syn-----	synthetic
thd-----	thread
thk-----	thickness
u/w-----	used with
w-----	wide
w/o-----	without

7. Federal Supply Codes for Manufacturers

<i>code</i>	<i>Manufacture</i>
03038	Long-Lok Corp, 1425 Gateway East Bldg Los Angeles, Calif. 90067
07707	United Shoe Machinery Corp 510 River Rd Shelton, Conn. 06485
10001	Bureau of Naval Weapons Washington, D. C.
28968	Hoke, Inc 1 Tenakill Park Cresshill, N. J. 07626
33525	Kidde Walter and Co, Inc Belleville, N. J.

<i>Code</i>	<i>Manufacturer</i>	<i>Code</i>	<i>Manufacturer</i>
57533	Sterling Precision Corp 103 Park Ave New York, N.Y. 10017	88408	Continental Motors Corp 12800 Kercheval Ave Detroit, Mich. 48215
72962	Elastic Stop Nut Corp of America 2330 Vauxhall Rd Union, NJ. 07083	92003	Parker Aircraft Co Los Angeles, Calif.
78385	South Wind Div of Stewart-Warner Corp 1514 Dover St Indianapolis, Ind 46207	95138	Perfecting Service Co P. O. Box 1949 Charlotte, N. C. 28201
80064	Bureau of Ships Washington, D. C.	96906	Military Standards Promulgated By Standardization Div Directorate of Logistic Services DSA
80201	Chicago Rawhide Mfg Co 1301 Elston Ave Chicago, Ill. 60622	99974	AC Electronics Division of General Motors Corp 7929 South Howell Ave Oak Creek, Wisc. 53154
81348	Federal Specifications Promulgated By General Services Administration		
81349	Military Specifications Promulgated By Standardization Div Directorate of Logistic Services DSA		
81361	Edgewood Arsenal Edgewood Arsenal, Md. 21010		
83298	Bendix Corp, The Electric Power Div W/S, Route 35 Eatontown, N.J. 07724		
86579	Precision Rubber Products Corp 3110 Oakridge Dr Dayton, Ohio 45417		
88044	Aeronautical Standards Group Dept of the Navy and Air Force		

8. Recommendations for Maintenance Publication Improvements

You can improve this manual by recommending improvements using DA Form 2028 (Recommended Changes to Publications and Blank forms) or a letter and mailing direct to Commander, Edgewood Arsenal ATTN: SAREA-DE-ET, Aberdeen Proving Ground, MD 21010. A reply will be furnished direct to you.

SECTION II. REPAIR PARTS FOR DIRECT SUPPORT, GENERAL SUPPORT, AND DEPOT MAINTENANCE

(1) SMR CODE	(2) FEDERAL STOCK NUMBER	(3) DESCRIPTION Reference Number & Mfr. Code Usable on Code		(4) UNIT OF MEAS	(5) QTY INC IN UNIT	(6) 30-DAY DS MAINT. ALLOWANCE			(7) 30-DAY GS MAINT. ALLOWANCE			(8) 1 YR ALW PER 100 EQUIP CNTGKY	(9) DEPOT MAINT. ALW PER 100 EQUIP.	(10) ILLUSTRATION		
						(A) 1-20	(B) 21-50	(C) 51-100	(A) 1-20	(B) 21-50	(C) 51-100			(a) FIGURE NO.	(b) ITEM NO.	
		GROUP 100-CANVAS														
P--C--	1040-083-2606	COVER ASSEMBLY COMPRESSOR D068-13-1551 (81361)		ea	1	3	6	11	*	*	*	100	10	1	1	
P--O--	5306-879-2800	BOLT, SHOULDER stl, hex hd, 0.350 in. dia, by 0.125 in. lg shoulder, 1/4-28, 0.750 in. lg, o/a lg 881-1-6878 (81361)		ea	2	*	*	*	*	*	*	1	20	1	2	
P--O--	1040-083-2607	STRAP ASSEMBLY shoulder right D81-1-6869-1 (81361)		ea	1	3	6	11	*	*	*	100	6	1	3	
P--O--	1040-863-7451	STRAP ASSEMBLY waist D81-1-6876 (81361)		ea	1	3	6	11	*	*	*	100	8	1	4	
P--O--	5310-880-5977	WASHER, FLAT cres, 0.750 in. dia, 1/4 in. bolt size MS15795-311 (96906)		ea	2	*	*	*	*	*	*	1	20	1	5	
P--O--	5310-877-5796	NUT, SELF-LOCKING HEXAGON stl, pltd, 1/4 in.-28 MS21044-N4 (96906)		ea	6	*	*	*	*	*	*	1	40	1	6	
P--C--	1040-083-2614	HARNESS, BACK REST D68-13-1570 (81361)		ea	1	3	6	11	*	*	*	100	10	1	7	

(1) SMR CODE	(2) FEDERAL STOCK NUMBER	(3) DESCRIPTION Reference Number & Mfr. Code Usable on Code		(4) UNIT OF MEAS	(5) QTY INC IN UNIT	(6) 30-DAY DS MAINT. ALLOWANCE			(7) 30-DAY GS MAINT. ALLOWANCE			(8) 1 YR ALW PER 100 EQUIP CNTGCV	(9) DEPOT MAINT. ALW PER 100 EQUIP.	(10) ILLUSTRATION	
						(A) 1-20	(B) 21-50	(C) 51-100	(A) 1-20	(B) 21-50	(C) 51-100			(a) FIGURE NO.	(b) ITEM NO.
P--C--	4020-233-6555	CORD, COTTON Type I or II, Class 2, Size 4, 8 strands, green 4HIL-C-2533 (81349)		ft	6	*	*	*	*	*	*	1	AR	1	8
P--O--	1040-083-2608	STRAP ASSEMBLY shoulder, left D81-1-6872-1 (81361) GROUP 200-WATER SEPARATOR		ea	1	3	6	11	*	*	*	100	8	1	9
P--F--	5340-205-6301	CLAMP, LOOP aluminum alloy, rubber cushion, 0.500 in. w., 0.250 in. w, 0.250 in. loop id MS21919D-4 (96906)		ea	1	*	*	*	*	*	*	1	5	2	1
P--F--	5305-989-6265	SCREW, MACHINE steel pltd, No. 10-32 x .437 in. lg. MS35226-262 (96906)		ea	7	*	*	*	*	*	*	1	50	2	2
P--F--	5310-596-7691	WASHER, LOCK stl pltd, ext teeth No. 10 bolt size MS35335-32 (96906)		ea	2	*	*	*	*	*	*	1	20	2	3
P--F--	5306-754-1787	BOLT, MACHINE stl pltd, hex hd, No. 10-24 x .469 lg MS20074-03-03 (96906)		ea	2	*	*	*	*	*	*	1	20	2	4

(1) SMR CODE	(2) FEDERAL STOCK NUMBER	(3) DESCRIPTION Reference Number & Mfr. Code Usable on Code		(4) UNIT OF MEAS	(5) QTY INC IN UNIT	(6) 30-DAY DS MAINT. ALLOWANCE			(7) 30-DAY GS MAINT. ALLOWANCE			(8) 1 YR ALW PER 100 EQUIP CNTGCV	(9) DEPOT MAINT. ALW PER 100 EQUIP.	(10) ILLUSTRATION	
						(A) 1-20	(B) 21-50	(C) 51-100	(A) 1-20	(B) 21-50	(C) 51-100			(a) FIGURE NO.	(b) ITEM NO.
M--F--		BRACKET, TUBE SUPPORT manufactured from aluminum alloy sheet .090 thickness, Type 6061-0 QQ-A-250/ II 9535-232-0321			1	*	*	*	*	*	*			2	5
P--F--	5310-596-7957	NUT, SELF-LOCKING HEXAGON stl pltd, nonmetallic insert No. 10-32 MS20364-1032A (96906)		ea	27	*	*	*	*	*	*	1	70	2	6
M--F--		TUBE ASSEMBLY connecting MANUFACTURED FROM 4710-277-5525		ea	1	*	*	*	*	*	*	1	5	2	7
P--F--	4730-788-0902	ELBOW PA821-0604 (92003)		ea	1	*	*	*	*	*	*	1	5	2	8
P--F--	4730-277-6372	LOCKNUT TUBE FITTING stl pltd, u/w 1/4 od tube AN6289-4 (88044)		ea	1	*	*	*	*	*	*	1	5	2	9
P--F--	5330-186-4947	WASHER, NONMETALLIC leather, 0.577 ln. od, 0.343 in. id, 0.094 ln. thk MS28777-4 (96906)		ea	1	1	1	2	*	*	*	15	5	2	10
P--F--	5330-263-8028	PACKING, PREFORMED syn rubber, 0.351 in. id, 0.395 in. od, 0.072 in. h MS29512-04 (96906)		ea	2	1	1	2	*	*	*	15	12	2	11

(1) SMR CODE	(2) FEDERAL STOCK NUMBER	(3) DESCRIPTION Reference Number & Mfr. Code Usable on Code		(4) UNIT OF MEAS	(5) QTY INC IN UNIT	(6) 30-DAY DS MAINT. ALLOWANCE			(7) 30-DAY GS MAINT. ALLOWANCE			(8) 1 YR ALW PER 100 EQUIP CNTGNCY	(9) DEPOT MAINT. ALW PER 100 EQUIP.	(10) ILLUSTRATION	
						(A) 1-20	(B) 21-50	(C) 51-100	(A) 1-20	(B) 21-50	(C) 51-100			(a) FIGURE NO.	(b) ITEM NO.
P--F--	4820-907-3448	VALVE ASSEMBLY pressure relief 116-B100-14 (78385)		ea	1	1	1	2	*	*	*	15	3	2	13
P--F--	104d-906-7899	SEPARATOR ASSEMBLY 3811000 (78385)		ea	1	*	*	*	*	*	*	1	5	2	14
P--F--	4730-908-6292	CLAMP, HOSE cres, 2-9/16 to 3-1/2 In. Id M335842-14 (96906)		ea	1	*	*	*	*	*	*	1	5	2	15
P--F--	1040-084-0438	FITTING SPRAY DIRECTING B68-13-1567 (81361)		ea	1	*	*	*	*	*	*	1	5	2	16
P--F--	4820-068-5052	VALVE, GLOBE 3000 psi male thread connections 1/8-27 thd 305 (28968)		ea	1	*	*	*	*	*	*	1	4	2	17
P--F--	5310-282-7834	NUT, PLAIN HEXAGON aluminum alloy, 7/8 in.-14 AN924-IOD (88044)		ea	1	*	*	*	*	*	*	1	10	2	18
P--F--	5310-616-3056	WASHER, LOCK stl pltd, flat ext teeth, 7/8 In. bolt size MS35335-41 (96906)		ea	1	*	*	*	*	*	*	1	10	2	19

(1) SMR CODE	(2) FEDERAL STOCK NUMBER	(3) DESCRIPTION Reference Number & Mfr. Code Usable on Code		(4) UNIT OF MEAS	(5) QTY INC IN UNIT	(6) 30-DAY DS MAINT. ALLOWANCE			(7) 30-DAY GS MAINT. ALLOWANCE			(8) 1 YR ALW PER 100 EQUIP CNTGCY	(9) DEPOT MAINT. ALW PER 100 EQUIP.	(10) ILLUSTRATION	
						(A) 1-20	(B) 21-50	(C) 51-100	(A) 1-20	(B) 21-50	(C) 51-100			(a) FIGURE NO.	(b) ITEM NO.
P--F--	4730-231-3026	ELBOW, TUBE stl pltd, u/w 1/4 In. od tube, bulkhead style thd male, 7/16-20, 1-37/64 and 61/64 In. leg lg 90 degree AN833-4 (88044) SEPARATOR ASSEMBLY SECTION		ea	1	*	*	*	*	*	*	1	5	2	20
P--H--	1040-921-5299	CAP, TANK 3811022 (78385)		ea	1	*	*	*	*	*	*	1	10	3	1
P--H--	5330-171-5099	RETAINER, PACKING teflon, 2.250 In. id x 2.490 In. od, 0.027 In. thk, 0.081 in. o/a h MS28783-6 (96906)		ea	1	*	*	*	*	*	*	1	5	3	2
P--H--	5330-788-0906	PACKING, PREFORMED 48A113 (78385)		ea	1	*	*	*	*	*	*	1	10	3	3

(1) SMR CODE	(2) FEDERAL STOCK NUMBER	(3) DESCRIPTION Reference Number & Mfr. Code Usable on Code		(4) UNIT OF MEAS	(5) QTY INC IN UNIT	(6) 30-DAY DS MAINT. ALLOWANCE			(7) 30-DAY GS MAINT. ALLOWANCE			(8) 1 YR ALW PER 100 EQUIP CNTGCY	(9) DEPOT MAINT. ALW PER 100 EQUIP.	(10) ILLUSTRATION	
						(A) 1-20	(B) 21-50	(C) 51-100	(A) 1-20	(B) 21-50	(C) 51-100			(a) FIGURE NO.	(b) ITEM NO.
P--H--	5310-275-3683	WASHER, LOCK stl pltd, flat ext teeth, 3/4 in. bolt size MS35335-40 (96906)		ea	1	*	*	*	*	*	*	1	4	4	4
P--H--	1040-083-2617	BAFFLE ASSEMBLY 873561 (33525)		ea	1	*	*	*	*	*	*	1	5	3	5
P--H--	1040-921-5300	SHELL MOISTURE SEPARATOR 3811021 (78385)		ea	1	*	*	*	*	*	*	1	3	3	6
P--H--	7690-728-5129	DECAL legend, drain after every hour of operation and before storage 3260391 (78385)		ea	1	*	*	*	*	*	*	1	5	3	7
		GROUP 300 - COMPRESSOR ASSEMBLY												4	
P--F--	5305-889-3002	SCREW, MACHINE stl pltd, pan hd, No, 8-32 x 0.312 in. lg MS35206-242 (96906)		ea	3	*	*	*	*	*	*	1	30	4	1
P--F--	5310-559-0070	WASHER, LOCK stl pltd, No. 8 size int teeth MS35333-38 (96906)		ea	3	*	*	*	*	*	*	1	30	4	2
P--F--	4310-728-5126	PLATE, INSTRUCTION lubrication 3260390 (78385)		ea	*	*	*	*	*	*	*	1	5	4	3

(1) SMR CODE	(2) FEDERAL STOCK NUMBER	(3) DESCRIPTION Reference Number & Mfr. Code Usable on Code		(4) UNIT OF MEAS	(5) QTY INC IN UNIT	(6) 30-DAY DS MAINT. ALLOWANCE			(7) 30-DAY GS MAINT. ALLOWANCE			(8) 1 YR ALW PER 100 EQUIP CNTGNCY	(9) DEPOT MAINT. ALW PER 100 EQUIP.	(10) ILLUSTRATION	
						(A) 1-20	(B) 21-50	(C) 51-100	(A) 1-20	(B) 21-50	(C) 51-100			(a) FIGURE NO.	(b) ITEM NO.
P-F-	1040-788-5373	GUARD 3260548 (57733)	ea	1	*	*	*	*	*	*	1	4	4	4	
P-F-	4310-983-3072	AFTERCOOLER 3750345 (78385)	ea	1	*	*	*	*	*	*	1	5	4	5	
P-F-	5340-769-5311	STRAP, RETAINING aluminum, 0.438 In. Id, 0.375 in. w, 1.250 In. lg o/a 3260185 (78385)	ea	6	*	**	*	*	*	*	1	30	4	6	
P-F-	5310-559-0070	WASHER, LOCK stl pltd, No. 8 size int teeth MS35333-38 (96906)	ea	12	REF	REF	REF	REF	REF	REF	REF	REF	4	7	
P-F-	5305-614-3423	SCREW, MACHINE stl pltd, fil hd, No. 8-32 x 3/8 In. lg MS35265-43 (96906)	ea	12	*	*	*	*	*	*	1	120	4	8	
P-H-	5306-964-9603	BOLT, EXTERNALLY RELIEVED body 3260124 (78385)	ea	1	*	*	*	*	*	*	1	5	4	9	
P-F-	5310-788-0900	NUT 52TE126 (72926)	ea	1	*	*	*	*	*	*	1	10	4	10	
P-F-	1040-727-3731	IMPELLER, FAN, AXIAL 3590175 (78385)	ea	1	*	*	*	*	*	*	1	4	4	11	
P-F-	1040-784-7455	TUBE ASSEMBLY, METAL 3260243 (78385)	ea	1	*	*	*	*	*	*	1	5	4	12	

(1) SMR CODE	(2) FEDERAL STOCK NUMBER	(3) DESCRIPTION Reference Number & Mfr. Code Usable on Code		(4) UNIT OF MEAS	(5) QTY INC IN UNIT	(6) 30-DAY DS MAINT. ALLOWANCE			(7) 30-DAY GS MAINT. ALLOWANCE			(8) 1 YR ALW PER 100 EQUIP CNTGCV	(9) DEPOT MAINT. ALW PER 100 EQUIP.	(10) ILLUSTRATION	
						(A) 1-20	(B) 21-50	(C) 51-100	(A) 1-20	(B) 21-50	(C) 51-100			(a) FIGURE NO.	(b) ITEM NO.
						P--H--	3120-993-0093	WASHER, THRUST stl, 0.718 in. od, 0.125 in. o/a thk. 0.325 in. ld 3260125 (78385)		ea	1			*	*
P--H-- 14	4310-986-7766	BUSHING, DRIVE 3260132 (78385)		ea	1	*	*	*	*	*	*	1		10	4
XB--H-S	4310-906-7905	COMPRESSOR ASSEMBLY 3260100-4 (78385)		ea	1	*	*	*	*	*		1	5	4	15
P--F--	1040-906-7909	TUBE ASSEMBLY 4428-0167 (78385)		ea	1	*	*	*	*	*		1	5	4	16
P--F--	5306-999-0488	BOLT, SELF-LOCKING stl pltd, hex hd, No. 10-24 x 0.469 in. lg LP20074-03-03 (03038)		ea	1	*	*	*	*	*	*	1	10	4	17
P--F--	5340-285-7010	CLAMP, LOOP alumin 19/2 in. w/o fastenings, 0.032 in. thk material, 0.375 in. loop id 742) 6 (88044)		ea	1	*	*	*	*	*	*	1	5	4	18
P--F--	5310-576-5752	WASHER, LOCK stl pltd, flat int teeth, No. 10 bolt size MS35333-39 (96906)		ea	6	*	*	*	*	*	*	1	60	4	19

(1) SMR CODE	(2) FEDERAL STOCK NUMBER	(3) DESCRIPTION Reference Number & Mfr. Code Usable on Code		(4) UNIT OF MEAS	(5) QTY INC IN UNIT	(6) 30-DAY DS MAINT. ALLOWANCE			(7) 30-DAY GS MAINT. ALLOWANCE			(8) 1 YR ALW PER 100 EQUIP CNTGNCY	(9) DEPOT MAINT. ALW PER 100 EQUIP.	(10) ILLUSTRATION	
						(A) 1-20	(B) 21-50	(C) 51-100	(A) 1-20	(B) 21-50	(C) 51-100			(a) FIGURE NO.	(b) ITEM NO.
P--F---	5305-842-5646	SCREW, MACHINE stl pltd, flat fillister hd drilled, No. 10-24, 0.500 In. lg MS35265-69 (96906)		ea	6	*	*	*	*	*	*	1	60	4	20
		COMPRESSOR SECTION AIR INTAKE FILTER												5	
P--C--	4310-792-1491	COVER, FLUID FILTER 3260424 (78385)		ea	1	*	*	*	*	*	*	1	5	5	1
P--C--	1040-764-5949	FILTER ELEMENT INTAKE AIR CLEANER 2.500 in. od, 2.140 In. id Inner 4455-0020 (78385)		ea	1	4	9	16	*	*	*	150	12	5	2
P--C--	5310-270-8810	NUT, PLAIN HEXAGON cres, No. 10-32 MS35650-104 (96906)		ea	1	*	*	*	*	*	*	1	30	5	3
P--C--	5310-576-5752	WASHER, LOCK stl pltd, flat Int teeth, No, 10 bolt size MS35333-39 (96906)		ea	1	REF	REF	REF	REF	REF	REF	REF	REF	5	4
P--C--	4330-773-1216	COVER, FLUID FILTER 3260167 (78385)		ea	1	*	*	*	*	*	*	1	10	5	5
P--C--	1040-764-5948	FILTER ELEMENT, INTAKE AIR CLEANER 4.060 in. od, 3.500 in. Id outer 4455-0021 (78385)		ea	1	3	6	11	*	*	*	100	12	5	6

(1) SMR CODE	(2) FEDERAL STOCK NUMBER	(3) DESCRIPTION Reference Number & Mfr. Code Usable on Code		(4) UNIT OF MEAS	(5) QTY INC IN UNIT	(6) 30-DAY DS MAINT. ALLOWANCE			(7) 30-DAY GS MAINT. ALLOWANCE			(8) 1 YR ALW PER 100 EQUIP CNTGNCY	(9) DEPOT MAINT. ALW PER 100 EQUIP.	(10) ILLUSTRATION	
						(A) 1-20	(B) 21-50	(C) 51-100	(A) 1-20	(B) 21-50	(C) 51-100			(a) FIGURE NO.	(b) ITEM NO.
						P--H--	4310-981-7579	THIRD STAGE RETAINER 13082746 (78385)		ea	1			*	*
P--H--	1270-733-1322	RING, DISK 2740251 (78385)		ea	1	REF	REF	REF	REF	REF	REF	REF	REF	6	2
P--H--	1270-830-2836	DISK, RUPTURE 274103 (78385)		ea	1	REF	REF	REF	REF	REF	REF	REF	REF	6	3
P--H--	4310-979-9279	CAP, CYLINDER, THIRD STAGE 3800178 (78385)		ea	1	*	*	*	*	*	*	1	10	6	4
P--H--	5360-989-6774	SPRING, HELICAL COMPRESSION 3-1/2 active coils, .930 free length, 0.47 dla material size 3260148 (78385)		ea	1	*	*	*	*	*	*	1	10	6	5
P--H--	4310-979-9284	VALVE, COMPRESSOR 3800195 (78385)		ea	1	*	*	*	*	*	*	1	10	6	6
P--F--	4730-197-2916	ELBOW, TUBE aluminum alloy, u/w 3/8 od, tube bulkhead style, thd male 9/16-18, 1-51/64 and 1-5/64 In. lg, 90 degree AN833-6D (88044)		ea	1	*	*	*	*	*	*	1	10	6	7
P--F--	4310-983-3076	STRAINER AND RELIEF VALVE ASSEMBLY third stage 3260179 (78385)		ea	1	*	*	*	*	*	*	1	10	6	7

(1) SMR CODE	(2) FEDERAL STOCK NUMBER	(3) DESCRIPTION Reference Number & Mfr. Code Usable on Code	(4) UNIT OF MEAS	(5) QTY INC IN UNIT	(6) 30-DAY DS MAINT. ALLOWANCE			(7) 30-DAY GS MAINT. ALLOWANCE			(8) 1 YR ALW PER 100 EQUIP CNTGCT	(9) DEPOT MAINT. ALW PER 100 EQUIP.	(10) ILLUSTRATION	
					(A) 1-20	(B) 21-50	(C) 51-100	(A) 1-20	(B) 21-50	(C) 51-100			(a) FIGURE NO.	(b) ITEM NO.
					P--F--	4730-277-5083	LOCKNUT TUBE FITTING aluminum, 3/8 od tube size, 9/16- 18 thd AN6289D6 (88044)	ea	1	*			*	*
P--F--	5330-186-1295	WASHER, NONMETALLIC leather, 1/4 in. od, 0.136 in. id, 0.94 in. thk MS28777-6 (96906)	ea	1	3	6	11	*	*	*	100	5	6	9
		1 EA GASKET tube fitting 130A457											6	10
P--H--	5310-550-9449	NUT, SELF-LOCKING HEXAGON stl, 1/4-20 50FK420 (56878)	ea	4	*	*	*	*	*	*	1	6	6	11
		4 EA WASHER 3260133											6	12
		2 EA PIN, WRIST 3260130											6	13
		1 EA PIN, COTTER AN381-2-10											6	14
		1 EA PIN, COTTER AN381-15-16											6	15
		2 EA GASKET 3260162											6	16

(1) SMR CODE	(2) FEDERAL STOCK NUMBER	(3) DESCRIPTION Reference Number & Mfr. Code Usable on Code		(4) UNIT OF MEAS	(5) QTY INC IN UNIT	(6) 30-DAY DS MAINT. ALLOWANCE			(7) 30-DAY GS MAINT. ALLOWANCE			(8) 1 YR ALW PER 100 EQUIP CNTGCV	(9) DEPOT MAINT. ALW PER 100 EQUIP.	(10) ILLUSTRATION	
						(A) 1-20	(B) 21-50	(C) 51-100	(A) 1-20	(B) 21-50	(C) 51-100			(a) FIGURE NO.	(b) ITEM NO.
						P--H--	4730-088-8520	1 EA GASKET 3260163	ea	1	*			*	*
		1 EA LINK, CONNECTING 3260129											6	18	
		50 EA BEARING NEEDLE Q8279											6	19	
P--H--	4730-088-8520	REDUCER, TUBE stl pltd, u/w 1/4 and 3/8 od tube, 7/16-20 and 9/16-18 thd size 3750231 (78385)	ea	1	*	*	*	*	*	*	1	5	6	20	
P--H--	4310-986-7764	BOSS SEAL METALLIC 13081136 (78385)	ea	1	*	*	*	2	3	6	50	10	6	21	
P--H--	4310-979-9295	CYLINDER AND PISTON ASSEMBLY third stage 3260170 (78385)	ea	1	*	*	*	2	3	6	50	6	6	22	
		SECOND STAGE													
		2 EA GASKET 3260162											7	7 1	
		2 EA GASKET 3260163											7	2	
		1 EA LINK, CONNECTING 3260128											7	3	

(1) SMR CODE	(2) FEDERAL STOCK NUMBER	(3) DESCRIPTION Reference Number & Mfr. Code Usable on Code		(4) UNIT OF MEAS	(5) QTY INC IN UNIT	(6) 30-DAY DS MAINT. ALLOWANCE			(7) 30-DAY GS MAINT. ALLOWANCE			(8) 1 YR ALW PER 100 EQUIP CNTGCT	(9) DEPOT MAINT. ALW PER 100 EQUIP.	(10) ILLUSTRATION		
						(A) 1-20	(B) 21-50	(C) 51-100	(A) 1-20	(B) 21-50	(C) 51-100			(a) FIGURE NO.	(b) ITEM NO.	
		4 EA WASHER 3260133													7	4
		1 EA PIN, COTTER AN381-15-16													7	5
		2 EA PIN, WRIST 3260130													7	6
		2 EA PIN, COTTER AN381-2-10													7	7
P--F--	4310-983-3075	STRAINER AND RELIEF VALVE ASSEMBLY 3260169 (78385)	ea	1								1	10	7	8	
P--F--	4730-277-5083	LOCKNUT, TUBE FITTING aluminum, 3/8 od tube size, 9/16- 18 thd AN628906 (88044)	ea	2	REF	REF	REF	REF	REF	REF	REF	REF	REF	7	9	
P--F--	5330-186-1295	WASHER, NONMETALLIC leather, 1/4 od, 0.136 ld, 0.062 ln. thk AN6246-1 (88044)	ea	2	REF	REF	REF	REF	REF	REF	REF	REF	REF	7	10	
		2 EA GASKET, TUBE FITTING 130A457													7	11
P--H--	5310-550-9449	NUT, SELF-LOCKING HEXAGON stl pltd, 1/4-20 50FK420 (56878)	ea	4				REF	REF	REF	REF	REF	REF	7	12	

(1) SMR CODE	(2) FEDERAL STOCK NUMBER	(3) DESCRIPTION Reference Number & Mfr. Code Usable on Code		(4) UNIT OF MEAS	(5) QTY INC IN UNIT	(6) 30-DAY DS MAINT. ALLOWANCE			(7) 30-DAY GS MAINT. ALLOWANCE			(8) 1 YR ALW PER 100 EQUIP CNTGNCY	(9) DEPOT MAINT. ALW PER 100 EQUIP.	(10) ILLUSTRATION	
						(A) 1-20	(B) 21-50	(C) 51-100	(A) 1-20	(B) 21-50	(C) 51-100			(a) FIGURE NO.	(b) ITEM NO.
P--H--	1040-906-7905	VALVE, EXHAUST 465-0118 (78385)		ea	1				2	3	6	50	10	7	13
P--H--	1040-906-7906	SPRING 425-0124 (78385)	A	ea	1				2	5	6	50	10	7	14
P--H--	5360-989-6775 3260161 (78385)	SPRING, HELICAL COMPRESSION	B	ea	1				2	3	6	50	7	14	
P--H--	5330-999-0478	WASHER, SPRING 448-0483 (78385)	A	ea	1				2	3	6	50	20	7	15
P--H--	5330-988-8808	PACKING, PREFORMED syn rubber, 1.171 In. id, 1.449 od x 0.139 thk MS29561-217 (96906)		ea	1				2	3	6	50	10	7	16
P--H--	1040-921-5294	CYLINDER CAP AND RUPTURE DISC ASSEMBLY SECOND STAGE 4408-0054 (78385)	A	ea	1				2	3	6	50	20	7	17
P--H--	4310-979-9281	CAP CYLINDER 3260159 (78385)	B	ea	1				2	3	6	50	20	7	17
P--H--	4730-186-9997	ELBOW, TUBE aluminum, u/w 3/8 od tube thd male, 9/16-18, 1-43/64 and 13/16 in. leg lg, 45 degree AN837-6D (88044)		ea	1				*	*	*	1	5	7	18
P--H--	4730-979-9296	CYLINDER AND PISTON ASSEMBLY - SECOND STAGE 4421-0021 (78385)		ea	1				2	3	6	50	6	7	19

(1) SMR CODE	(2) FEDERAL STOCK NUMBER	(3) DESCRIPTION Reference Number & Mfr. Code Usable on Code		(4) UNIT OF MEAS	(5) QTY INC IN UNIT	(6) 30-DAY DS MAINT. ALLOWANCE			(7) 30-DAY GS MAINT. ALLOWANCE			(8) 1 YR ALW PER 100 EQUIP CNTGCTY	(9) DEPOT MAINT. ALW PER 100 EQUIP.	(10) ILLUSTRATION	
						(A) 1-20	(B) 21-50	(C) 51-100	(A) 1-20	(B) 21-50	(C) 51-100			(a) FIGURE NO.	(b) ITEM NO.
						P--H--	4730-197-2916	50 EA BEARING, NEEDLE 08279 FIRST STAGE	ea	1					
P--H--	4730-277-5083	ELBOW, TUBE aluminum alloy, u/w 3/8 od tube, bulkhead style thd male, 9/16-18, 1-51/64 and 1-5/64 in. leg lg, 90 degree AN833-6D (88044)	ea	1					REF	REF	REF	REF	REF	8	2
P--H--	5330-186-1295	LOCKNUT, TUBE FITTING aluminum, 3/8 od tube size, 9/16- 18 thd AN6289D6 (88044)	ea	1					REF	REF	REF	REF	REF	8	3
P--H--	5310-596-7957	WASHER, NONMETALLIC leather, 1/4 od, 0.136 id, 0.94 in. thk MS28777-6 (96906)	ea	1					REF	REF	REF	REF	REF	8	4
P--H--	5310-596-7957	1 EA GASKET tube fitting 130A457	ea	1					REF	REF	REF	REF	REF	8	5
P--H--	5310-596-7957	NUT, SELF-LOCKING HEXAGON stl pltd, nonmetallic insert, No. 10-32 MS20364-1032A (96906)	ea	1					REF	REF	REF	REF	REF	8	5

(1) SMR CODE	(2) FEDERAL STOCK NUMBER	(3) DESCRIPTION Reference Number & Mfr. Code Usable on Code		(4) UNIT OF MEAS	(5) QTY INC IN UNIT	(6) 30-DAY DS MAINT. ALLOWANCE			(7) 30-DAY GS MAINT. ALLOWANCE			(8) 1 YR ALW PER 100 EQUIP CNTGCT	(9) DEPOT MAINT. ALW PER 100 EQUIP.	(10) ILLUSTRATION	
						(A) 1-20	(B) 21-50	(C) 51-100	(A) 1-20	(B) 21-50	(C) 51-100			(a) FIGURE NO.	(b) ITEM NO.
						P--H--	5305-984-6215	SCREW, MACHINE stl pltd, No. 10-24 x 1.250 in. lg MS35206-268 (96906)	ea	4					
P--H--	5310-576-5752	WASHER, LOCK stl pltd, flat int teeth, No. 10 bolt size MS35333-39 (96906)	ea	4				REF	REF	REF	REF	REF	8	7	
P--H--	5310-183-4406	WASHER, FLAT rd, aluminum alloy, No. 10 screw size, 0.438 In. dia AN960PDIO (88044)	ea	1				*	*	*	1	10	8	8	
P--H--	4310-790-0954	CYLINDER HEAD COMPRESSOR 3260135 (78385)	ea	1				2	4	8	75	10	8	9	
P--H--	5330-988-8809	PACKING, PREFORMED syn rubber, 1.424 in. ld, 1.630 in. od, 0.103 in. h MS29561-127 (96906)	ea	1				2	4	8	75	12	8	10	
P--H--	4310-979-9294	STOP, VALVE 3260147 (78385)	ea	1				2	4	8	75	10	8	11	
P--H--	5340-989-6776	SPRING HELICAL COMPRESSION 4-1/2 active coils, .380 free length, .035 dia material 3800196 (78385)	ea	1				2	4	8	75	10	8	12	
P--H--	4310-979-9289	VALVE, EXHAUST first stage 3260149 (78385)	ea	1				2	4	8	75	10	8	13	

(1) SMR CODE	(2) FEDERAL STOCK NUMBER	(3) DESCRIPTION Reference Number & Mfr. Code Usable on Code		(4) UNIT OF MEAS	(5) QTY INC IN UNIT	(6) 30-DAY DS MAINT. ALLOWANCE			(7) 30-DAY GS MAINT. ALLOWANCE			(8) 1 YR ALW PER 100 EQUIP CNTGCV	(9) DEPOT MAINT. ALW PER 100 EQUIP.	(10) ILLUSTRATION	
						(A) 1-20	(B) 21-50	(C) 51-100	(A) 1-20	(B) 21-50	(C) 51-100			(a) FIGURE NO.	(b) ITEM NO.
P--H--	4310-979-9288	PLATE, VALVE 3260146		ea	1				2	4	8	75	10	8	14
P--H--	4310-979-9287	VALVE, INTAKE, FIRST STAGE 3260164 (78385)		ea	1				2	4	8	75	10	8	15
P--H--	4310-986-7767	SPRING, INTAKE VALVE, FIRST STAGE 3260165 (78385)		ea	1				2	4	8	75	10	8	16
P--H--	5330-727-2240	PACKING, PREFORMED syn rubber, 2.359 In. Id, 2.637 In. od, 0.139 In. h 529561-229 (96906)		ea	1				2	4	8	75	12	8	17
P--H--	5305-806-1800	SCREW, CAP, HEXAGON HEAD cres, No. 10-32, 2.250 In. lg 8599621-330 (99974)		ea	1				1	2	3	25	10	8	18
P--H--	5310-550-9449	NUT, SELF-LOCKING HEXAGON stl pltd, 1/4-20 50FK420 (56878)		ea	4				REF	REF	REF	REF	REF	8	19
P--H--	4310-727-3736	PIN, PISTON stl, 1.921 In. lg, 0.3752 In. od, 0.250 In. Id 3260142 (78385)		ea	1				2	4	8	75	15	8	20
P--H--	5365-804-6855	RING, RETAINING cres, int application, 0.415 In. od, 0.025 In. thk MS16625-4037 (96906)		ea	2				2	4	8	75	20	8	21
		2 EA GASKET 3260144												8	22

(1) SMR CODE	(2) FEDERAL STOCK NUMBER	(3) DESCRIPTION Reference Number & Mfr. Code Usable on Code		(4) UNIT OF MEAS	(5) QTY INC IN UNIT	(6) 30-DAY DS MAINT. ALLOWANCE			(7) 30-DAY GS MAINT. ALLOWANCE			(8) 1 YR ALW PER 100 EQUIP CNTGCY	(9) DEPOT MAINT. ALW PER 100 EQUIP.	(10) ILLUSTRATION	
						(A) 1-20	(B) 21-50	(C) 51-100	(A) 1-20	(B) 21-50	(C) 51-100			(a) FIGURE NO.	(b) ITEM NO.
						P--H--	4310-788-0907	GASKET 3260143 (78385)		ea	1				
P--H--	1620-790-0985	CYLINDER AND PISTON ASSEMBLY 3260139 (78385)		ea	1				2	4	8	75	6	8	24
P--H--	5315-727-1636	PIN, SHOULDER, HEADED cres, button hd, 2 stops, 3/8 in. o/a lg 3260153 (78385)		ea	1				*	*	*	1	10	8	25
		ENDBELL, CONNECTING ROD AND SHAFT												9	
P--H--	5310-550-9449	NUT, SELF-LOCKING HEXAGON stl, 1/4-20 MSS5310-6 (08288)		ea	6				REF	REF	REF	REF	REF	9	1
P--H--	1040-076-8849	PLATE, IDENTIFICATION 3260299 (78385)		ea	1				*	*	*	1	10	9	2
P--H--	5305-253-5609	SCREW, DRIVE stl pltd, rd hd, No. 2 size, 1/8 ln. lg MS21318-13 (96906)		ea	4				*	*	*	1	40	9	3
P--H--	1040-759-9767	ENDBELL 3260281 (78385)		ea	1				*	*	*	1	2	9	4
		1 EA GASKET endbell 3260188												9	5

(1) SMR CODE	(2) FEDERAL STOCK NUMBER	(3) DESCRIPTION Reference Number & Mfr. Code Usable on Code		(4) UNIT OF MEAS	(5) QTY INC IN UNIT	(6) 30-DAY DS MAINT. ALLOWANCE			(7) 30-DAY GS MAINT. ALLOWANCE			(8) 1 YR ALW PER 100 EQUIP CNTGCTY	(9) DEPOT MAINT. ALW PER 100 EQUIP.	(10) ILLUSTRATION	
						(A) 1-20	(B) 21-50	(C) 51-100	(A) 1-20	(B) 21-50	(C) 51-100			(a) FIGURE NO.	(b) ITEM NO.
						P--H--	5330-993-0084	SEAL, PLAIN ENCASED 1.499 in. bore dia, .938 shaft dia 14830Q6 (80201)	ea	1					
P--H--	3110-902-3398	BEARING, BALL, ANNULAR single row, radial, 25 mm bore, 47 mm od, 12 mm thickness 614-0014 (78385)	ea	1				*	*	*	1	20	9	7	
P--H--	3110-100-2394	BEARING BALL, ANNULAR 03L05X3A (43334)	ea	1				*	*	*	1	20	9	7	
P--H--	1040-906-7902	SHAFT 412-0093 (78385)	ea	1				*	*	*	1	5	9	8	
P--H--	4310-992-5746	CRANKSHAFT 3260123 (78385)	ea	1				*	*	*	1	5	9	8	
P--H--	1040-759-3895	PLATE, RETAINER master rod 3260127-(78385)	ea	1				*	*	*	1	5	9	9	
P--H--	5315-788-5372	PIN, STRAIGHT, HEADLESS stl, 0.340 in. lg, 0.250 in. dia 3260168 (57733)	ea	1				*	*	*	1	5	9	10	
P--H--	3110-902-3397	BEARING, BALL, ANNULAR single row, radial, 30 mm bore, 55 mm od, 15 mm wide 614-0015 (78385)	ea	1				*	*	*	1	20	9	11	

(1) SMR CODE	(2) FEDERAL STOCK NUMBER	(3) DESCRIPTION Reference Number & Mfr. Code Usable on Code		(4) UNIT OF MEAS	(5) QTY INC IN UNIT	(6) 30-DAY DS MAINT. ALLOWANCE			(7) 30-DAY GS MAINT. ALLOWANCE			(8) 1 YR ALW PER 100 EQUIP CNTGCV	(9) DEPOT MAINT. ALW PER 100 EQUIP.	(10) ILLUSTRATION	
						(A) 1-20	(B) 21-50	(C) 51-100	(A) 1-20	(B) 21-50	(C) 51-100			(a) FIGURE NO.	(b) ITEM NO.
						P--H--	3110-807-3181	BEARING, BALL, ANNULAR Q3L06X3A (43334)	B	ea	1				
P--H--	5305-889-3002	SHEAR BOLT MS35206-242 (96906)		ea	18	*			*	*	*	1	36	9	12
P--H--	5306-559-0474	BOLT, MACHINE hex hd, stl, 5/16-24 x 3/4 in. lg MS35292-32 (96906)		ea	4				*	*	*	1	40	9	13
P--H--	5310-012-0379	WASHER, LOCK stl pltd, split helical ring, 5/16 in. bolt size MS35337-26 (96906)		ea	4				*	*	*	1	40	9	14
M--H--		SPACER, COMPRESSOR DRIVE PAD manufactured from FSN 9515-825-4238 CRES. .010 THK QQ-S-766 (81348)												9	15
P--H--	2805-759-3894	CRANKCASE 3260220 (78385)		ea	1				*	*	*	1	2	9	16
P--H--	5330-993-0085	SEAL, PLAIN ENCASED 11062 in. shaft dia bore, dia 1.499 14812Q6 (80201)		ea	1				2	3	6	50	100	9	17

(1) SMR CODE	(2) FEDERAL STOCK NUMBER	(3) DESCRIPTION Reference Number & Mfr. Code Usable on Code		(4) UNIT OF MEAS	(5) QTY INC IN UNIT	(6) 30-DAY DS MAINT. ALLOWANCE			(7) 30-DAY GS MAINT. ALLOWANCE			(8) 1 YR ALW PER 100 EQUIP CNTGCV	(9) DEPOT MAINT. ALW PER 100 EQUIP.	(10) ILLUSTRATION	
						(A) 1-20	(B) 21-50	(C) 51-100	(A) 1-20	(B) 21-50	(C) 51-100			(a) FIGURE NO.	(b) ITEM NO.
						XA--H--		ROD ASSEMBLY MASTER 4417-0013 (78385)	A	ea	1				
P--H--		CONNECTING ROD ASSEMBLY 3260240 (78385) OIL RESERVOIR AND BREATHER	B	ea	1				*	*	*	1	5	9	18
P--O--	1040-921-5301	BREATHER ASSEMBLY 4455-0017 (78385)		ea	1				*	*	*	1	10	10	1
P--H--	5310-596-7957	NUT, SELF-LOCKING HEXAGON stl cad pltd, nylon insert, No. 10-32 MS20364-1032A (96906)	B	ea	13				REF	REF	REF	REF	REF	10	2
P--F--	4730-287-0092	PLUG, MACHINE THREAD aluminum alloy, 5/8 in. o/a lg, 1/2-20 thd AN814-5D (88044)		ea	1			*	*	*	*	*	12	10	3
P--F--	5330-582-7289	PACKING, PREFORMED syn rubber, 0.412 in. id, 0.552 in. od, 0.070 in. h 130A0456 (78385)		ea	1	2	3	6	*	*	*	50	100	10	4
P--H--	5305-984-6211	SCREW, MACHINE pan hd, stl pltd, No. 10-24 x .625 in. lg MS35206-264 (96906)	A	ea	14				*	*	*	1	140	10	5
P--H--	1040-921-5296	RESERVOIR, OIL 457-0023 (78385)		ea	1				*	*	*	1	5	10	6

(1) SMR CODE	(2) FEDERAL STOCK NUMBER	(3) DESCRIPTION Reference Number & Mfr. Code Usable on Code	(4) UNIT OF MEAS	(5) QTY INC IN UNIT	(6) 30-DAY DS MAINT. ALLOWANCE			(7) 30-DAY GS MAINT. ALLOWANCE			(8) 1 YR ALW PER 100 EQUIP CNTGCTY	(9) DEPOT MAINT. ALW PER 100 EQUIP.	(10) ILLUSTRATION	
					(A) 1-20	(B) 21-50	(C) 51-100	(A) 1-20	(B) 21-50	(C) 51-100			(a) FIGURE NO.	(b) ITEM NO.
					P--F--	1040-921-5295	PLUG, SIGHT OIL LEVEL 628-0041 (78385) 1 EA GASKET, OIL RESERVOIR 3260267 (78385) 1 EA PACKING, PREFORMED MS29561-013 (96906) 1 EA CYLINDER 3260566 (78385)	ea	1	*			*	*
P--H--	5305-614-0246	SCREW, MACHINE stl pltd, fillister hd, drilled No. 10-32, 1/2 in. lg MS35266-63 (96906) 1 EA SOCKET, MASTER ROD 3260556 (78385) 2 EA SHIM 3260265 (78385) 1 EA PISTON ASSEMBLY 3260569 (78385) 1 EA BALL MS1343355 (96906) 1 EA RETAINER, BALL 448-0480 (78385)	ea	2				*	*	*	1	20	10	11
													10	12
													10	13
													10	14
													10	15
													10	16

(1) SMR CODE	(2) FEDERAL STOCK NUMBER	(3) DESCRIPTION Reference Number & Mfr. Code Usable on Code		(4) UNIT OF MEAS	(5) QTY INC IN UNIT	(6) 30-DAY DS MAINT. ALLOWANCE			(7) 30-DAY GS MAINT. ALLOWANCE			(8) 1 YR ALW PER 100 EQUIP CNTGNCY	(9) DEPOT MAINT. ALW PER 100 EQUIP.	(10) ILLUSTRATION	
						(A) 1-20	(B) 21-50	(C) 51-100	(A) 1-20	(B) 21-50	(C) 51-100			(a) FIGURE NO.	(b) ITEM NO.
						A---		1 EA RETAINER, PISTON 3260266 (78385)							
		GROUP 400-ENGINE													
		ENGINE AND MOUNTING BRACKET SECTION													
		ENGINE AND MOUNTING BRACKET ASSEMBLY												11	
P--H--	5305-939-9190	SCREW, MACHINE MS35275-265 (96906)1	ea	2				*	*	*	1	20	11	1	
P--H--	2990-972-2318	PIPE, EXHAUST C68-13-1572 (81361)	ea	1				*	*	*	1	10	11	2	
P--H--	5310-543-5933	WASHER, LOCK cres, flat int teeth, No. 10 bolt size MS35333-73 (96906)	ea	2				*	*	*	1	20	11	3	
P--H--	5310-270-8810	NUT, PLAIN, HEXAGON cres, No. 10-32 MS35650-104 (96906)	ea	2				REF	REF	REF	REF	REF	11	4	
P--H--S	2805-068-7510	ENGINE, GAS 1-AO-8-111 (88408)	ea	1				*	*	*	1	20	11	5	
P--H--	2990-971-1366	PULLEY 868-13-1532 (81361)	ea	1				*	*	*	1	4	11	6	

(1) SMR CODE	(2) FEDERAL STOCK NUMBER	(3) DESCRIPTION Reference Number & Mfr. Code Usable on Code		(4) UNIT OF MEAS	(5) QTY INC IN UNIT	(6) 30-DAY DS MAINT. ALLOWANCE			(7) 30-DAY GS MAINT. ALLOWANCE			(8) 1 YR ALW PER 100 EQUIP CNTGCTY	(9) DEPOT MAINT. ALW PER 100 EQUIP.	(10) ILLUSTRATION	
						(A) 1-20	(B) 21-50	(C) 51-100	(A) 1-20	(B) 21-50	(C) 51-100			(a) FIGURE NO.	(b) ITEM NO.
						P--H--	5305-068-0500	SCREW, CAP HEXAGON HEAD stl pltd, 1/4-20, 0.500 in. lg MS90725-3 (96906)		ea	8				
P--H--	5310-209-0786	WASHER, LOCK stl pltd, 1/4 in. id, external teeth MS35335-13 (96906)		ea	8				*	*	*	1	80	11	8
P--H--	1040-971-4921	BRACKET, ANGLE, RIGHT HAND B68-13-1541 (81361)		ea	2				*	*	*	1	80	11	9
P--H--	5306-064-8407	BOLT, SELF-LOCKING 1/4-20 x 3/4 lg A68-13-1528 (81361)		ea		12			*	*	*	1	120	11	10
P--H--	5340-971-4920	BRACKET, ANGLE, LEFT HAND B68-13-1540 (81361)		ea		2			*	*	*	1	10	11	11.
		ENGINE ACCESSORIES SECTION												12	
P--F--	5305-989-6265	SCREW, MACHINE stl pltd, No. 10-32 x .437 in. lg MS35226-262 (96906)		ea	1	REF	REF	REF	REF	REF	REF	REF	REF	12	1
P--F--	5340-079-7837	CLAMP, LOOP stl pltd, syn rubber cushion, 0.500 In. wide, 0.250 In. loop id MS21333-67 (96906)		ea	1	*	*	*	*	*	*	1	5	12	2
P--F--	5310-576-5752	WASHER, LOCK stl pltd, flat int teeth, No. 10 bolt size MS35333-39 (96906)		ea	1	REF	REF	REF	REF	REF	REF	REF	REF	12	3

(1) SMR CODE	(2) FEDERAL STOCK NUMBER	(3) DESCRIPTION Reference Number & Mfr. Code Usable on Code		(4) UNIT OF MEAS	(5) QTY INC IN UNIT	(6) 30-DAY DS MAINT. ALLOWANCE			(7) 30-DAY GS MAINT. ALLOWANCE			(8) 1 YR ALW PER 100 EQUIP CNTGCTY	(9) DEPOT MAINT. ALW PER 100 EQUIP.	(10) ILLUSTRATION	
						(A) 1-20	(B) 21-50	(C) 51-100	(A) 1-20	(B) 21-50	(C) 51-100			(a) FIGURE NO.	(b) ITEM NO.
						P-F-	53104-34-9751	NUT, PLAIN, HEXAGON stl pltd, No. 10-32 MS35650-302 (96906)	ea	1	*			*	*
P-F-	5330-263-8030	PACKING, PREFORMED syn rubber, 0.468 In. Id, 0.624 in. od, 0.078 In. thickness MS29512-6 (96906)	ea	1	1	3	*	*	*	*	20	12	12	5	
P-F-	1040-084-0436	CONNECTOR AND FILTER FUEL B68-13-1566 (81361)	ea	1	1	2	3	*	*	*	20	5	12	6	
P-F-	4720-062-4332	TUBE ASSEMBLY, METAL copper 1/4 od, female connectors 803831 (33525)	ea	1	*	*	*	*	*	*	1	5	12	7	
P-F-	4820-254-8640	COCK, SHUTOFF screw stem 628-0015 (78385)	ea	1	*	*	*	*	*	*	1		12	8	
				B											
P-F-	1040-921-5297	ELBOW 428-0323 (78385)	ea	1	*	*	*	*	*	*	1	20	12	9	
				A											
P-F-	4730-639-9730	ELBOW, PIPE brass, female and male ends, 1/8-27, 90 degree 11681-81N (30327)	ea	1	*	*	*	*	*	*	1		12	9	
				B											

(1) SMR CODE	(2) FEDERAL STOCK NUMBER	(3) DESCRIPTION Reference Number & Mfr. Code Usable on Code		(4) UNIT OF MEAS	(5) QTY INC IN UNIT	(6) 30-DAY DS MAINT. ALLOWANCE			(7) 30-DAY GS MAINT. ALLOWANCE			(8) 1 YR ALW PER 100 EQUIP CNTGCV	(9) DEPOT MAINT. ALW PER 100 EQUIP.	(10) ILLUSTRATION	
						(A) 1-20	(B) 21-50	(C) 51-100	(A) 1-20	(B) 21-50	(C) 51-100			(a) FIGURE NO.	(b) ITEM NO.
						P--F--	1040-921-5291	GROUP 500-FRAME AND FUEL TANK		ea	1				
P--H--	9905-763-3254	PLATE, INSTRUCTION operating 4340172 (78385)		ea	1				*	*	*	1	10	13	2
P--F--	5305-989-6265	SCREW, MACHINE stl pltd, No. 10 x 32 x .437 in. lg MS35226-262 (96906)		ea	5	REF	REF	REF	REF	REF	REF	REF	REF	13	3
P--F--	5310-809-8546	WASHER, FLAT stl pltd, No. 10 screw size MS27183-8 (96906)		ea	10	*	*	*	*	*	*	1	80	13	4
P--F--	5330-999-0462	WASHER, NONMETALLIC syn rubber, 0.620 In. od, 0.190 in. ld, 0.060 in. thk 448-0507 (78385)		ea	2	8	18	33	*	*	*	350	800	13	5

(1) SMR CODE	(2) FEDERAL STOCK NUMBER	(3) DESCRIPTION Reference Number & Mfr. Code Usable on Code		(4) UNIT OF MEAS	(5) QTY INC IN UNIT	(6) 30-DAY DS MAINT. ALLOWANCE			(7) 30-DAY GS MAINT. ALLOWANCE			(8) 1 YR ALW PER 100 EQUIP CNTGCTY	(9) DEPOT MAINT. ALW PER 100 EQUIP.	(10) ILLUSTRATION	
						(A)	(B)	(C)	(A)	(B)	(C)			(a)	(b)
						1-20	21-50	51-100	1-20	21-50	51-100			FIGURE NO.	ITEM NO.
P-F-	5340-282-8335	CLAMP, LOOP stl, rubber cushion, 0.375 in. wide, 0.500 in. loop id MS21919F8 (96906)		ea	4	*	*	*	*	*	*	1	20	13	6
P-F-	5310-596-7957	NUT, SELF-LOCKING HEXAGON stl pltd, nonmetallic insert, No. 10-32 MS20364-1032A (96906)		ea	5	REF	REF	REF	REF	REF	REF	REF	REF	13	7
P-F-	5340-597-9408	CLAMP, LOOP stl, rubber cushion, 0.375 In. w, 0.625 in. loop ld MS21919F10 (96906)	A	ea	1	*	*	*	*	*	*	1	5	13	8
P-F-	2910-912-9485	TANK, FUEL, ENGINE 4457-0016 (78385)	A	ea	1	*	*	*	*	*	*	1	3	13	9
P-F-	1040-994-7985	FUEL TANK ASSEMBLY 4457-0010 (78385)	B	ea	1	*	*	*	*	*	*	1	3	13	9
P-F-	5310-877-5796	NUT, SELF-LOCKING HEXAGON stl pltd, nonmetallic insert, 1/4- 28 MS21044-N4 (96906)		ea	4	REF	REF	REF	REF	REF	REF	REF	REF	13	10
P-F-	5330-263-8031	PACKING, PREFORMED syn rubber, 0.644 In. ld, 0.718 in. od, 0.087 in. high thickness MS29512-08 (96906)		ea	1	1	2	3	*	*	*	25	5	13	11

(1) SMR CODE	(2) FEDERAL STOCK NUMBER	(3) DESCRIPTION Reference Number & Mfr. Code Usable on Code		(4) UNIT OF MEAS	(5) QTY INC IN UNIT	(6) 30-DAY DS MAINT. ALLOWANCE			(7) 30-DAY GS MAINT. ALLOWANCE			(8) 1 YR ALW PER 100 EQUIP CNTGCTY	(9) DEPOT MAINT. ALW PER 100 EQUIP.	(10) ILLUSTRATION	
						(A) 1-20	(B) 21-50	(C) 51-100	(A) 1-20	(B) 21-50	(C) 51-100			(a) FIGURE NO.	(b) ITEM NO.
						P--F--	4730-289-3070	PLUG, MACHINE THREAD aluminum, 0.730 in. o/a lg, 3/4-16 MS9015-08 (96906)	ea	1					
P--H--	1040-921-5298	FRAME, BOTTOM E68-13-1590 (81361)	ea	1				*	*	*	1	2	13	13	
P--H-	3320-999-0397	RIVET, BLIND aluminum alloy, oval hd 3/32 In. dia shank, 3/32 in. lg 648-0042-1 (78385)	ea	4				*	*	*	1	40	13	14	
P--H--	4310-999-0597	PLATE IDENTIFICATION 434-0230 (78385)	ea	1				*	*	*	1	5	13	15	
P--H--	1040-081-8079	PLATE IDENTIFICATION 434-0167 (78385)	ea	1				*	*	*	1	5	13	15	
P--H--	5310-061-7325	NUT, SELF-LOCKING HEXAGON cres, 1/4-28 MS21045-4 (96906)	ea	4				*	*	*	*	*	13	16	
P--H--	5305-993-2459	SCREW, MACHINE stl pltd, pan hd, 1/4 in.-28, 1 in. lg MS35207-283 (96906)	ea	4				*	*	*	1	40	13	17	
P-H-	5310-194-0637	WASHER, FLAT stl pltd, 0.276 In. id MS9320-10 (96906)	ea	4				*	*	*	1	40	13	18	
P-H-	5340-977-7247	MOUNT, RUBBER A68-13-1523	ea	4				2	3	6	50	12	13	19	

(1) SMR CODE	(2) FEDERAL STOCK NUMBER	(3) DESCRIPTION Reference Number & Mfr. Code Usable on Code	(4) UNIT OF MEAS	(5) QTY INC IN UNIT	(6) 30-DAY DS MAINT. ALLOWANCE			(7) 30-DAY GS MAINT. ALLOWANCE			(8) 1 YR ALW PER 100 EQUIP CNTGCTY	(9) DEPOT MAINT. ALW PER 100 EQUIP.	(10) ILLUSTRATION	
					(A) 1-20	(B) 21-50	(C) 51-100	(A) 1-20	(B) 21-50	(C) 51-100			(a) FIGURE NO.	(b) ITEM NO.
					P--F--	5305-068-0507	SCREW, CAP, HEXAGON HEAD stl pltd, 1/4-28 x .750 in. lg MS90726-7 (96906) A	ea	4	*			*	*
M--F--		BRACKET MOUNTING FUEL TANK 2.125 in. lg x .750 in. w x .078 thickness 407-0271 (78385) manufactured from stainless steel Class 20 FSN 9515-204-4555 A		4									13	21
		HOOK, CHAIN, S cres A81-1-882 (81361)	ea	1	*	*	*	*	*	*	1	5	13	22
P--F--	4010-958-0633	CHAIN, WELDLESS stl, 0.062 in. dia stock, 23 links per ft, Type 2, Class 7 MIL-C-271 (81349)	ea	1	a/r	a/r	a/r	a/r	a/r	a/r	a/r	a/r	13	23
P--F--	5330-265-1075	PACKING, PREFORMED syn rubber, 1.234 in. id, 1.612 in. od, 0.139 in. thk MS29513-218 (96906)	ea	1	1	2	3	*	*	*	20	5	13	24
P--F--	4030-063-3979	HOOK, CHAIN 0.072 wire, 3/8 in. id, loops 3/16 in. min. opening 881-1-526 (81361)	ea	1	*	*	*	*	*	*	1	5	1	25
P--F--	1040-976-8980	CAP ASSEMBLY 068-13-1560 (81361)	ea	1	*	*	*	*	*	*	1	5	13	26

(1) SMR CODE	(2) FEDERAL STOCK NUMBER	(3) DESCRIPTION Reference Number & Mfr. Code Usable on Code		(4) UNIT OF MEAS	(5) QTY INC IN UNIT	(6) 30-DAY DS MAINT. ALLOWANCE			(7) 30-DAY GS MAINT. ALLOWANCE			(8) 1 YR ALW PER 100 EQUIP CNTGCTY	(9) DEPOT MAINT. ALW PER 100 EQUIP.	(10) ILLUSTRATION	
						(A) 1-20	(B) 21-50	(C) 51-100	(A) 1-20	(B) 21-50	(C) 51-100			(a) FIGURE NO.	(b) ITEM NO.
N P O	5330-805-2966	GROUP 500 - Continued CHARGING HOSE PACKING, PREFORMED MS28778-4 (96906)		EA	1	*	*	*	*	*	*	*	*	14	1
N P O	4730-933-0723	ELBOW, TUBE TO BOSS MS51528-A4 (96906)		EA	1	*	*	*	*	*	*	*	*	14	2
N P O	4730-084-0435	TEE, PIPE TO TUBE B68-13-1553 (81361)		EA	1	*	*	*	*	*	*	*	*	14	3
N P O	6685-087-6925	GAGE, PRESSURE DIAL INDICATING 21-25DFM 1-4 CBM 3000 (38508)		EA	1	*	*	*	*	*	*	*	*	14	4
N P O	4730-618-3410	ADAPTER B81-3-30 (81361)		EA	1	*	*	*	*	*	*	*	*	14	5
N P O	4720-289-2630	HOSE ASSEMBLY, NONMETALLIC B81-3-65 (81361)		EA	1	*	*	*	*	*	*	*	*	14	6
N P O	1040-759-7352	VALVE ASSEMBLY C81-6-407 (81361)		EA	1	*	*	*	*	*	*	*	*	14	7
N P O	4730-851-2278	ADAPTER, STRAIGHT, PIPE TO TUBE B81-6-384 (81361)		EA	1	*	*	*	*	*	*	*	*	14	8
N P O	4730-863-0774	COUPLING HALF, QUICK DISCONNECT 2AEF2 (95138)		EA	1	*	*	*	*	*	*	*	*	14	9

SMUEA-TS Form 21
Rev 1 Dec 67

Replaces SMUEA-TS Form 21, 15 Jun 67, which is obsolete.

(1) SMR CODE	(2) FEDERAL STOCK NUMBER	(3) DESCRIPTION Reference Number & Mfr. Code Usable on Code		(4) UNIT OF MEAS	(5) QTY INC IN UNIT	(6) 30-DAY DS MAINT. ALLOWANCE			(7) 30-DAY GS MAINT. ALLOWANCE			(8) 1 YR ALW PER 100 EQUIP CNTGCY	(9) DEPOT MAINT. ALW PER 100 EQUIP.	(10) ILLUSTRATION	
						(A) 1-20	(B) 21-50	(C) 51-100	(A) 1-20	(B) 21-50	(C) 51-100			(a) FIGURE NO.	(b) ITEM NO.
						P-H-	1040-788-5374	GROUP 600-REPAIR KITS KIT, GASKET, COMPRESSOR 4459-0093 (57733) c/o 4 EA GASKET, No. 130A457 4 EA GASKET, No. 3260162 2 EA GASKET, No. 3260163 1 EA PACKING, MS29561-229 2 EA GASKET, No. 3260144 1 EA GASKET & BELL, No. 3260188 1 EA GASKET, No. 3260267	ea	1	*			*	*
P-H-	4310-979-9301	REPAIR KIT, CONNECTING LINK, THIRD STAGE 4459-0049 c/o 4 EA WASHER, No. 3260133 2 EA PIN, WRIST, No. 3260130 1 EA PIN, COTTER, No. AN381-2-10 1 EA PIN, COTTER, AN381-15-16 1 EA LINK, CONNECTING, No. 3260129 50 EA BEARING, NEEDLE, No. Q8279	ea	1	*	*	*	2	3	6	50	6	6	12	
													6	13	
													6	14	
													6	15	
													6	18	
													6	19	

(1) SMR CODE	(2) FEDERAL STOCK NUMBER	(3) DESCRIPTION Reference Number & Mfr. Code Usable on Code	(4) UNIT OF MEAS	(5) QTY INC IN UNIT	(6) 30-DAY DS MAINT. ALLOWANCE			(7) 30-DAY GS MAINT. ALLOWANCE			(8) 1 YR ALW PER 100 EQUIP CNTGNCY	(9) DEPOT MAINT. ALW PER 100 EQUIP.	(10) ILLUSTRATION	
					(A) 1-20	(B) 21-50	(C) 51-100	(A) 1-20	(B) 21-50	(C) 51-100			(a) FIGURE NO.	(b) ITEM NO.
					P--H--	4310-979-9300	KIT, REPAIR CONNECTING LINK, SECOND STAGE 4459-0048 (78385) c/o 1 EA LINK, CONNECTING, No. 326012E 4 EA WASHER, No. 3260133 1 EA PIN, COTTER, AN381-15-16 2 EA PIN, WRIST, No. 3260130 1 EA PIN, COTTER, No. AN 381-2-10 50 EA BEARING NEEDLE, No. Q8279	ea	1					
P--H--	4310-979-9299	KIT, REPAIR, OIL PUMP 4459-0047 (78385) c/o 1 EA PACKING, No. MS29561-013 1 EA CYLINDER, No. 3260566 1 EA SOCKET, MASTER ROD, No. 3260556 2 EA SHIM, No. 3260265 1 EA PISTON ASSEMBLY, No. 3260569 1 EA BALL, No. MS134355 1 EA RETAINER, BALL, No. 448-0480 1 EA RETAINER, PISTON, No. 3260266	ea	1				2	3	6	50	15	10	9
P--H--	4310-574-7708	KIT, DISK, RUPTURE 408-0236 (78385) c/o 1 EA RETAINER 130B2746 (78385) 1 EA RING, DISK 2740251 (78385)	ea	1									10	12
													10	13
													10	14
													10	15
													10	16
													10	17
													6	1
													6	2

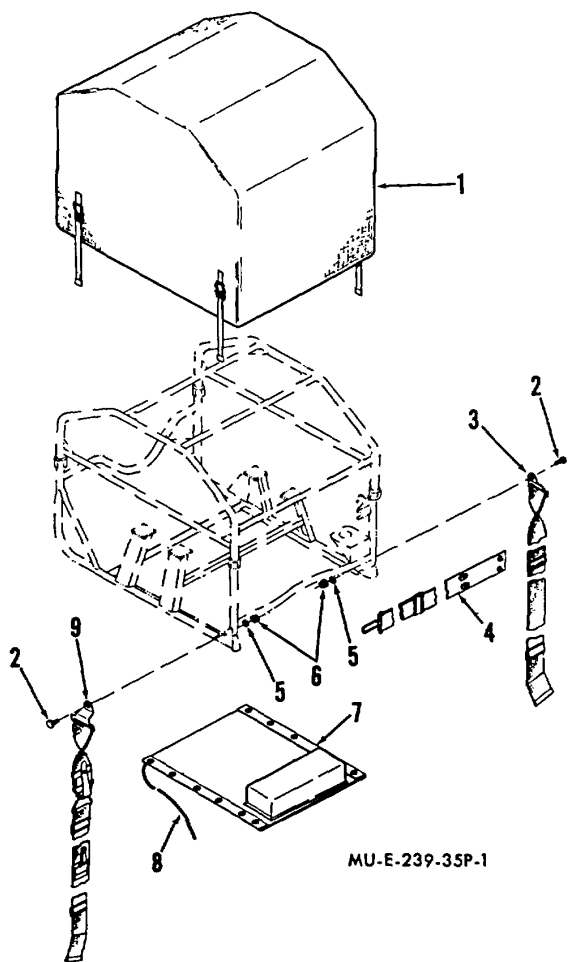


Figure 1. Cover assembly.

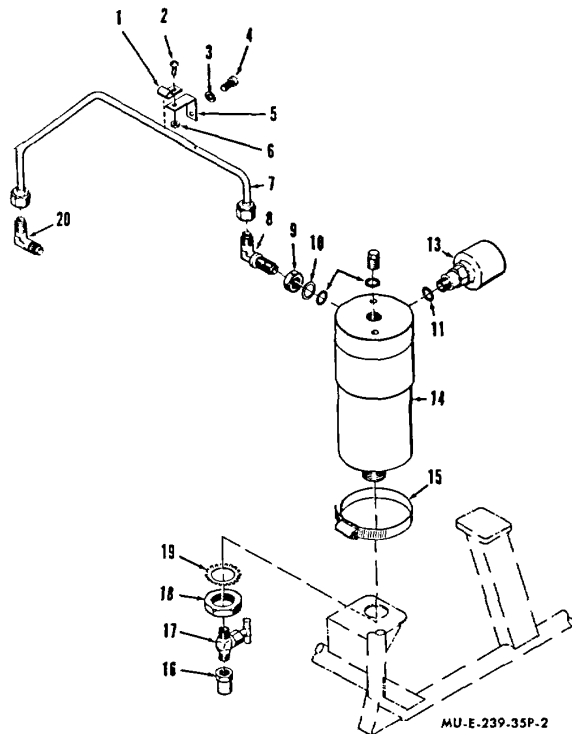


Figure 2. Moisture separator.

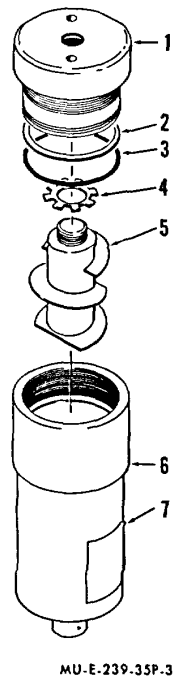


Figure 3. Separator section.

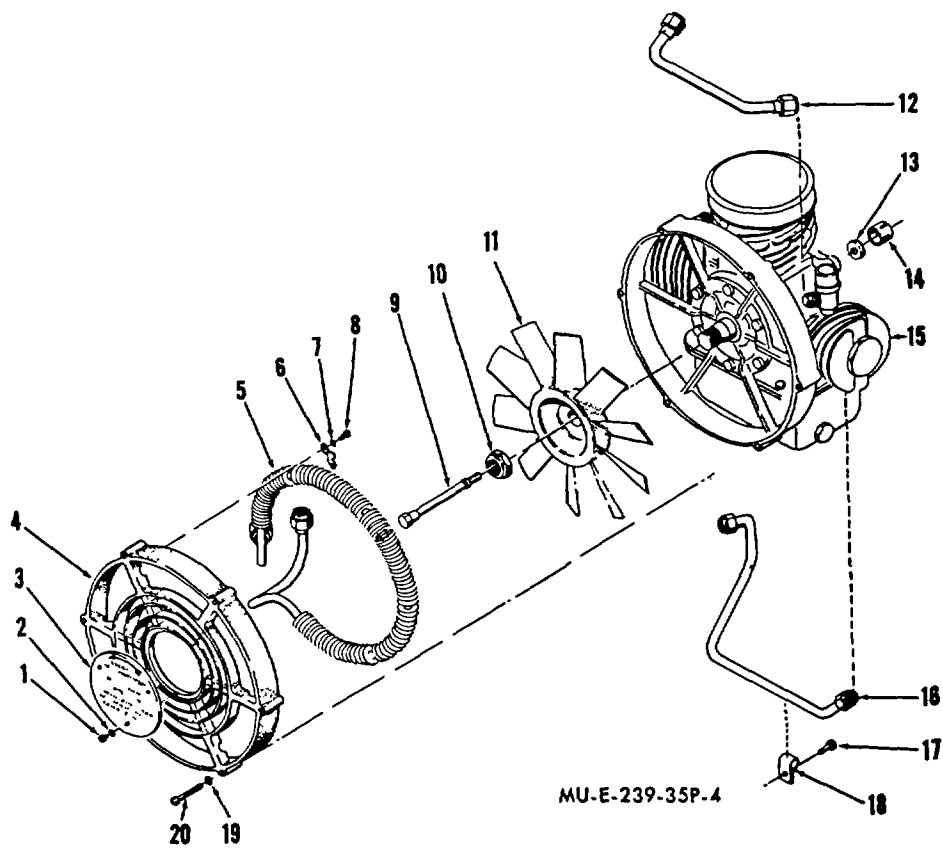


Figure 4. Fan, aftercooler, and basic compressor.

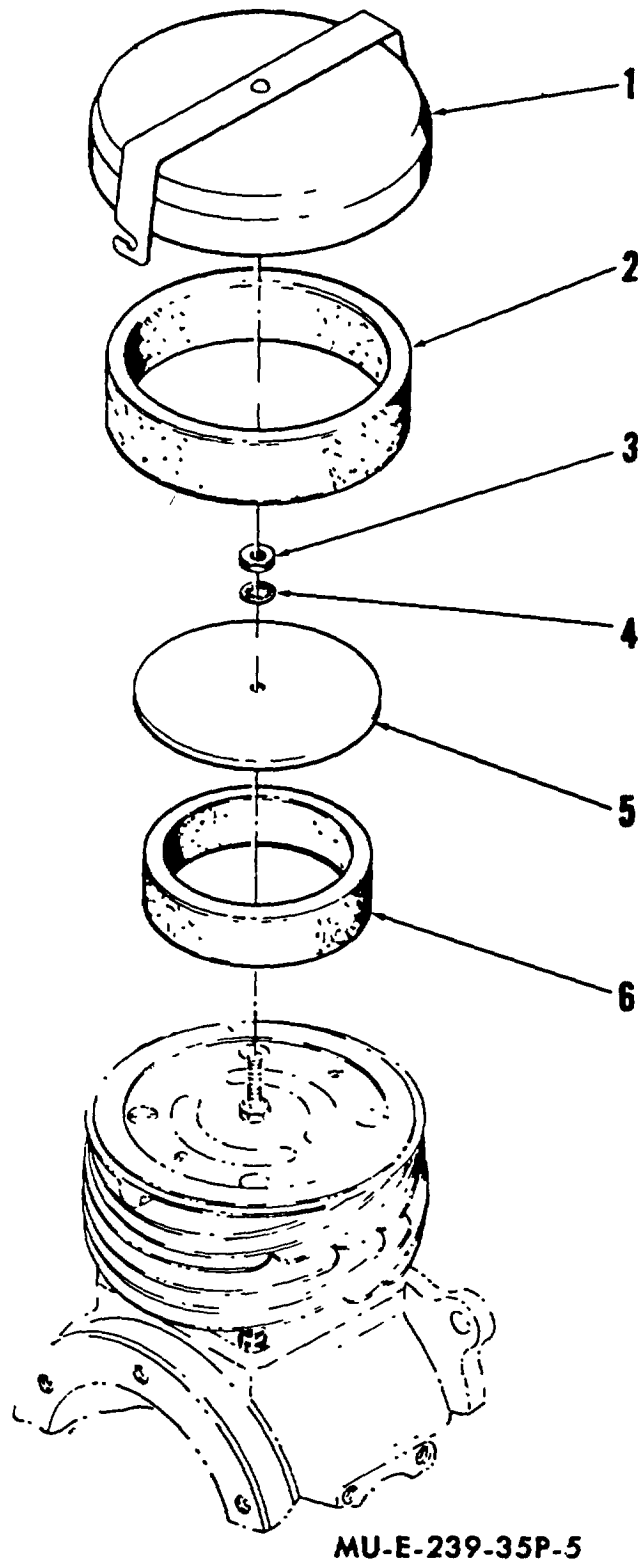


Figure 5. Air intake filter.

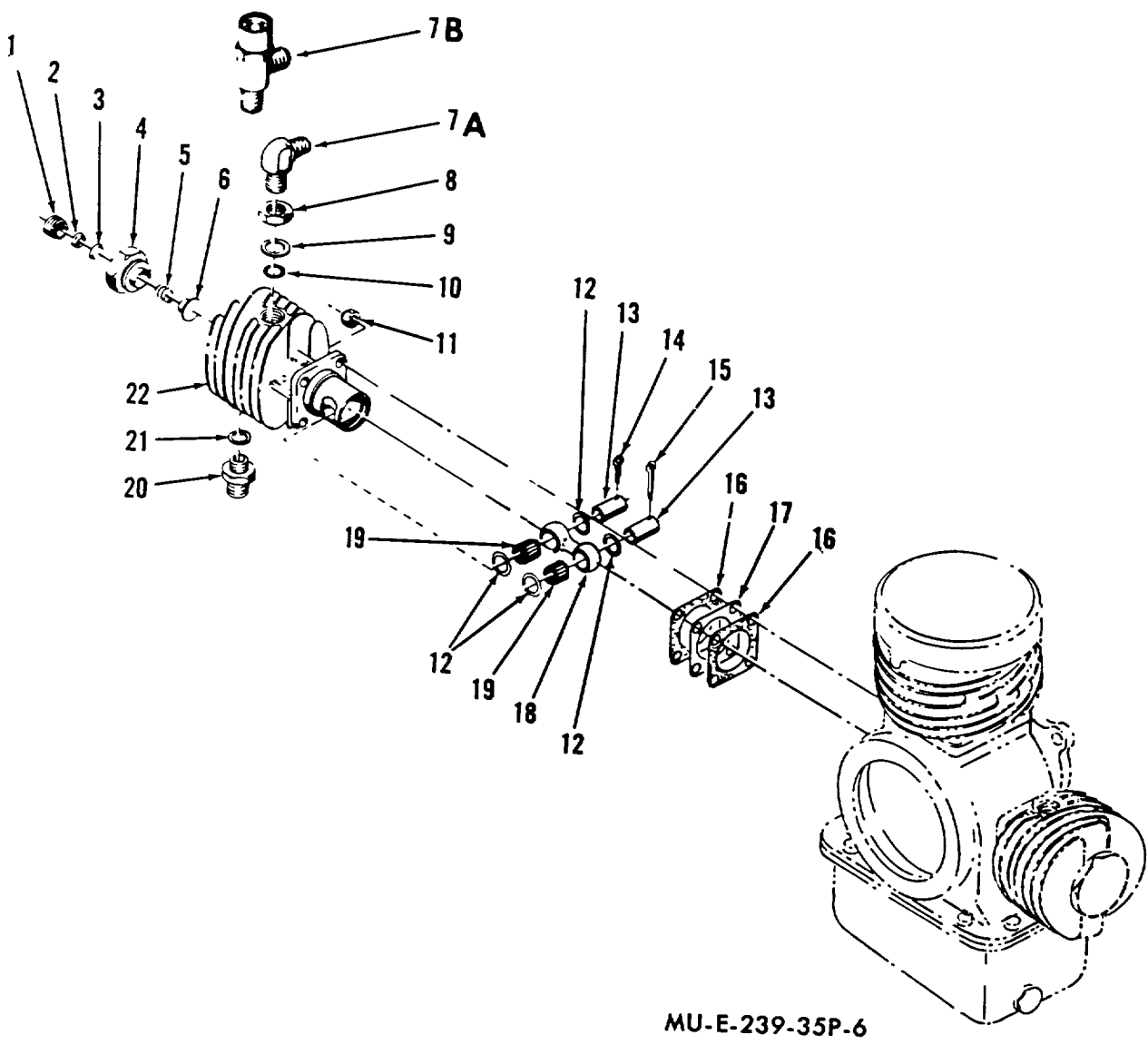


Figure 6. Third stage.

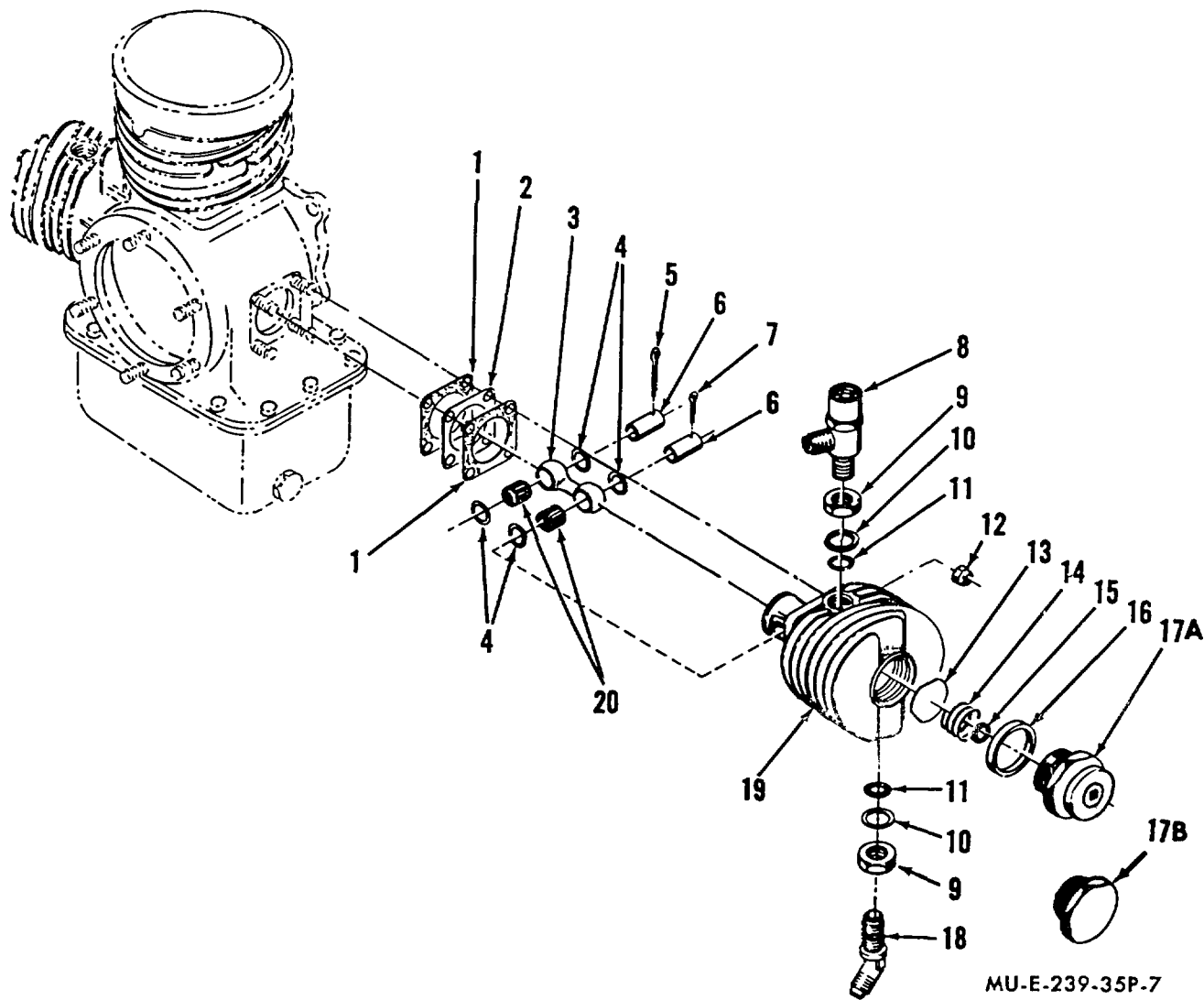


Figure 7. Second stage.

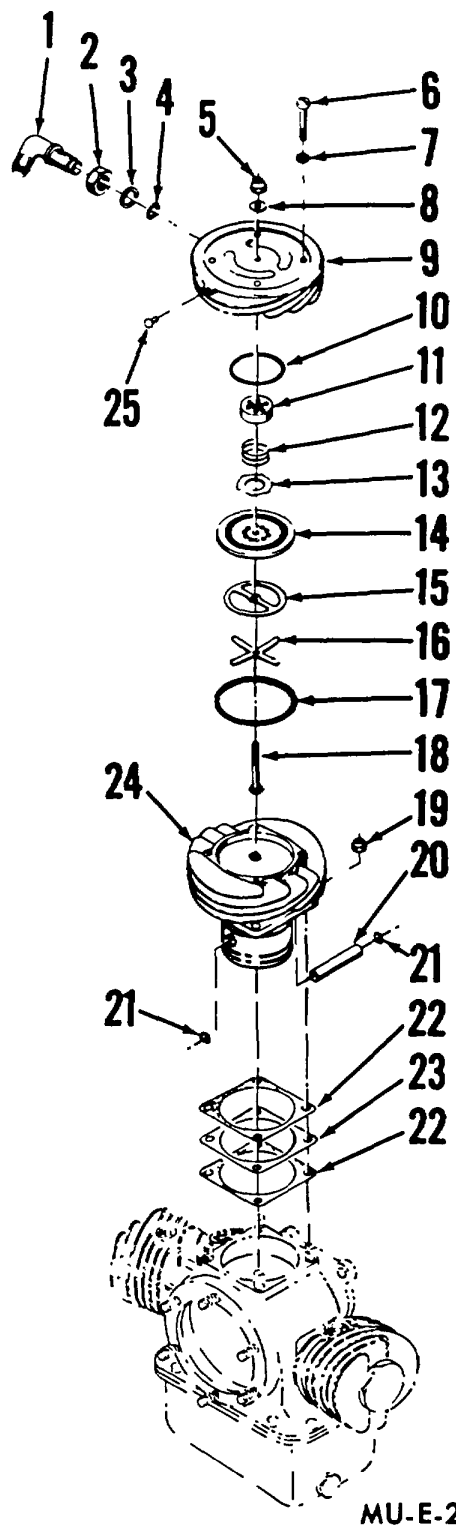
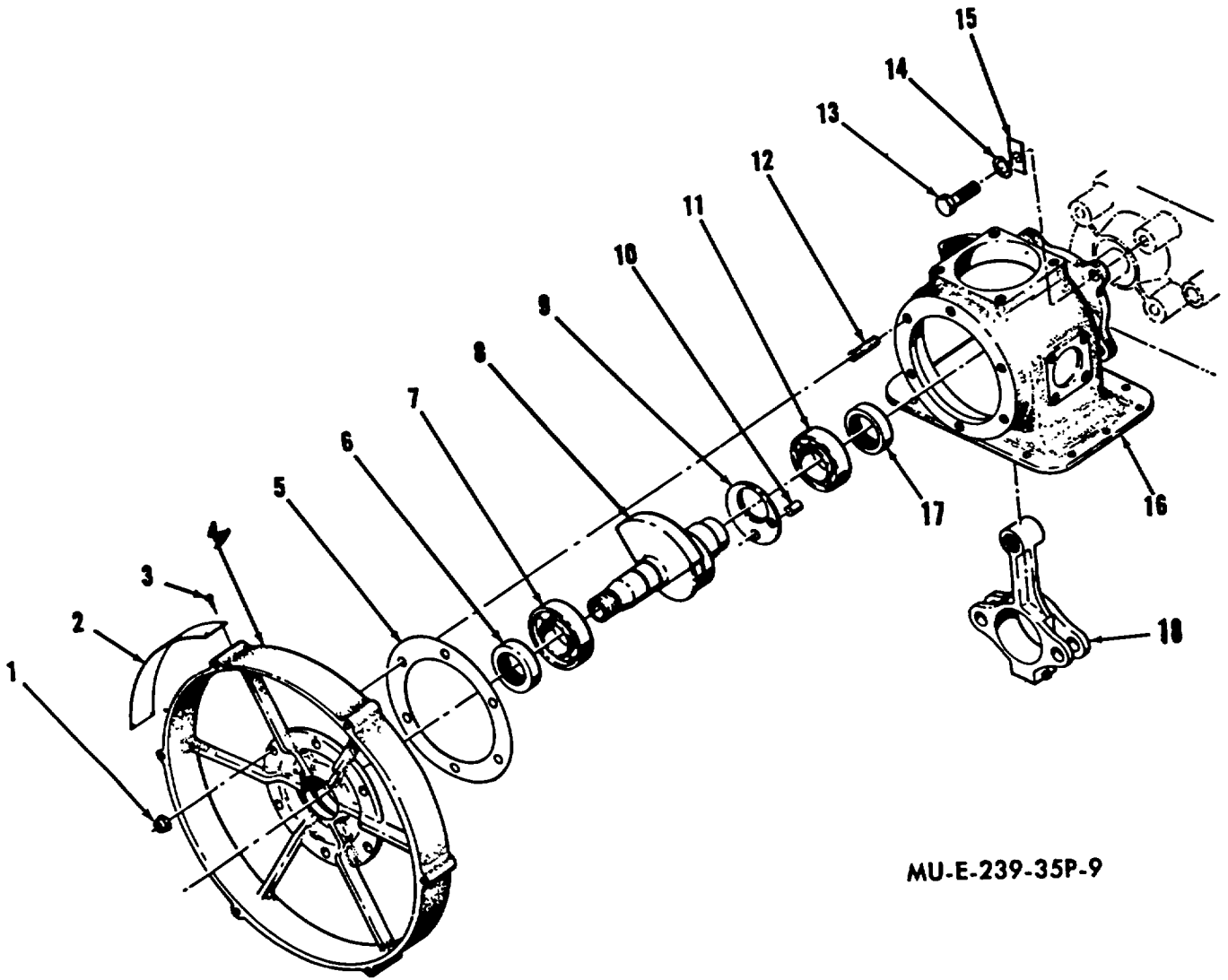


Figure 8. First stage.



MU-E-239-35P-9

Figure 9. Endbell connecting rod and shaft.

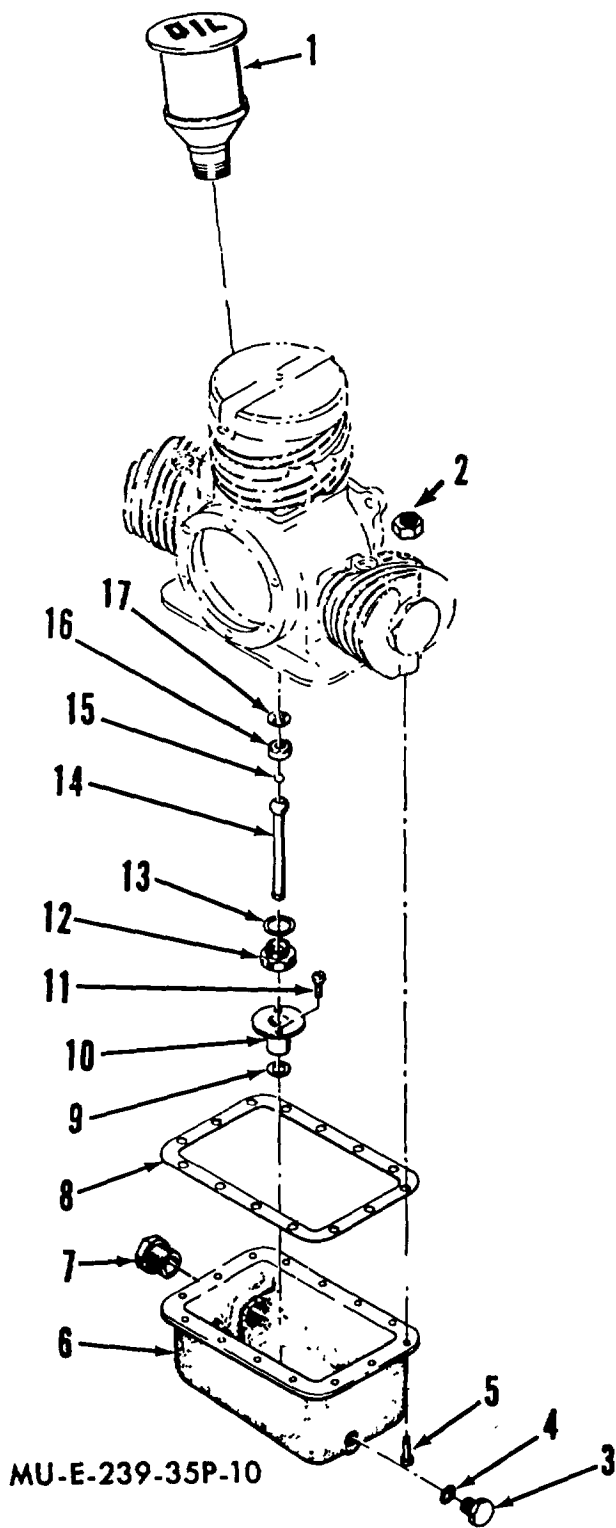


Figure 10. Oil reservoir and breather.

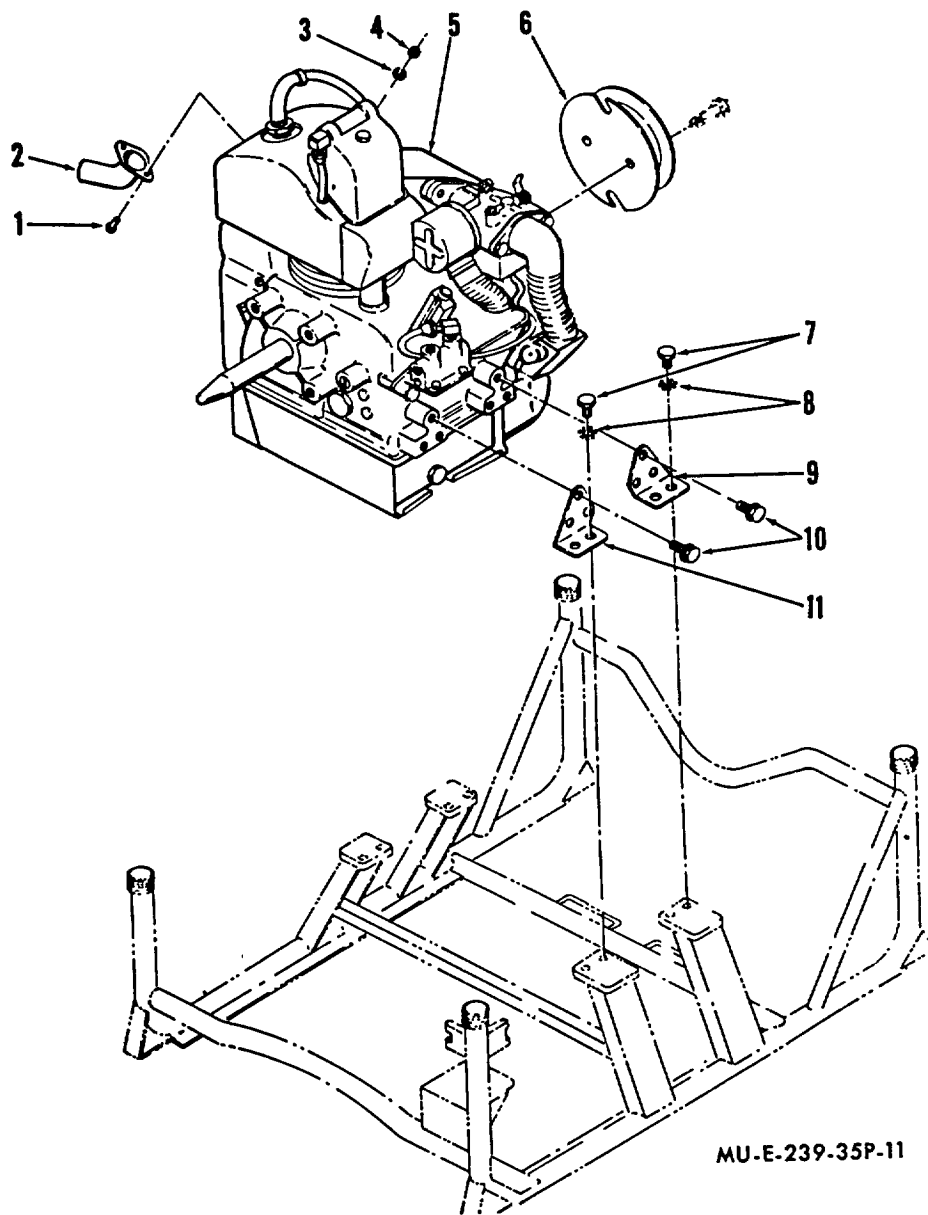


Figure 11. Engine and mounting bracket.

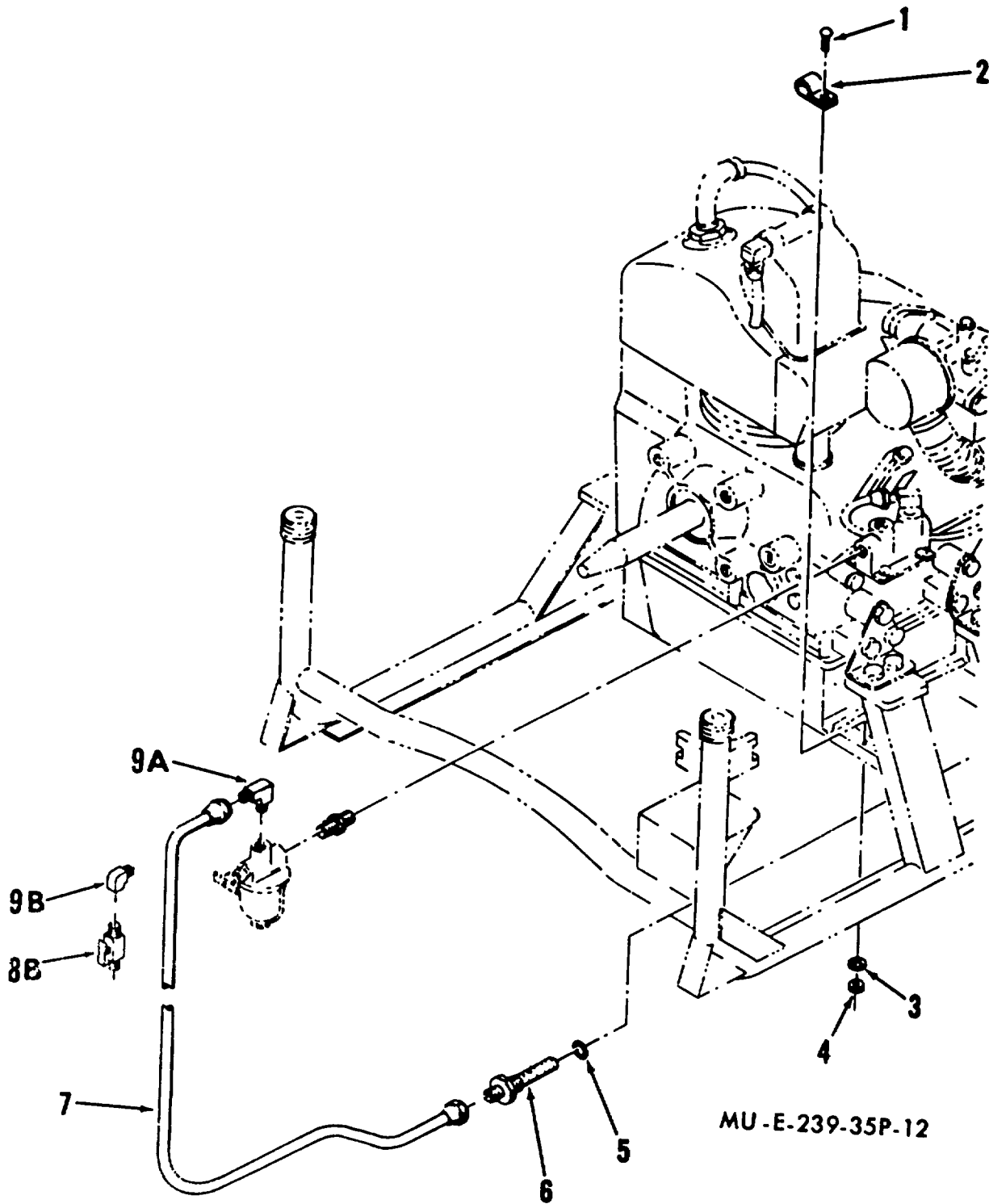
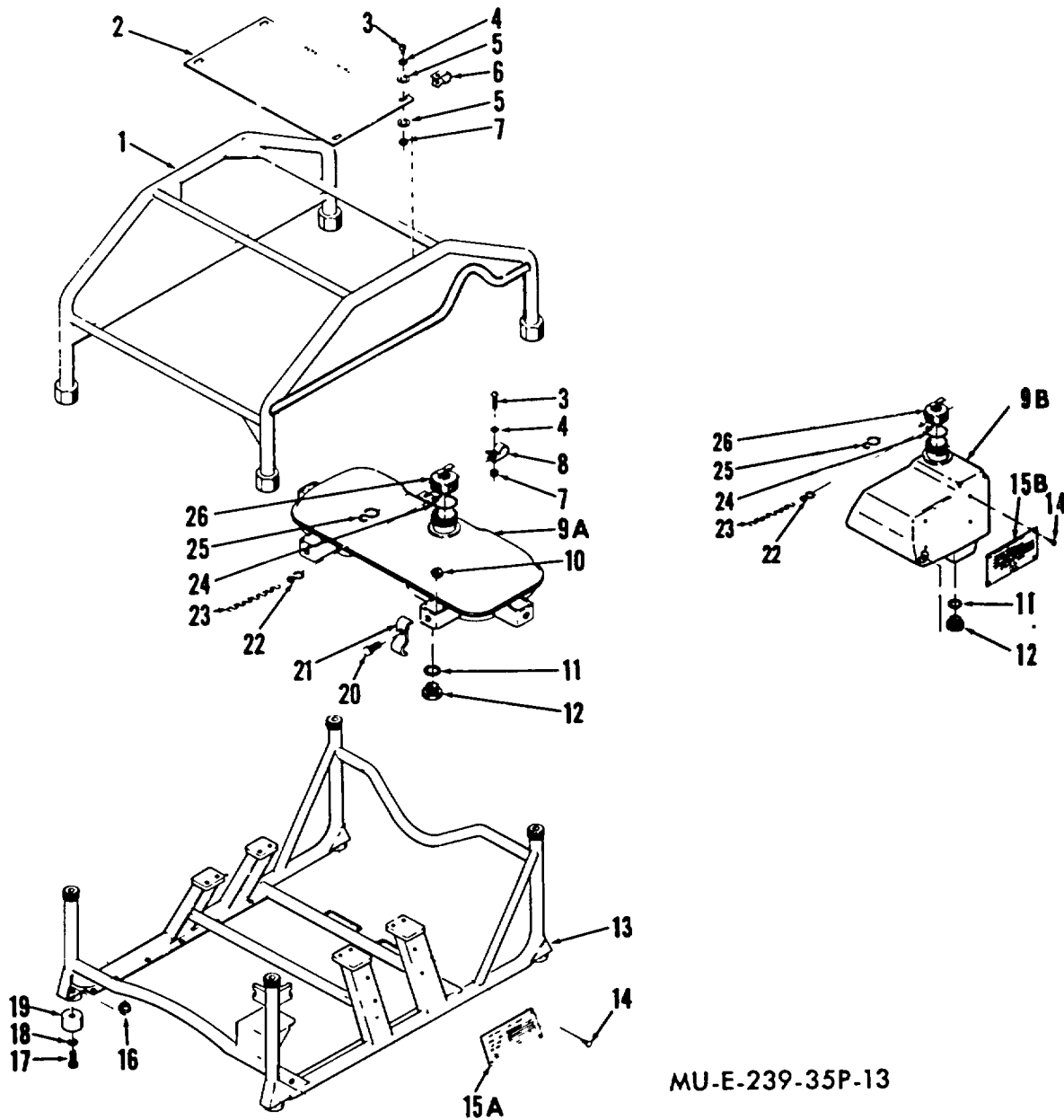
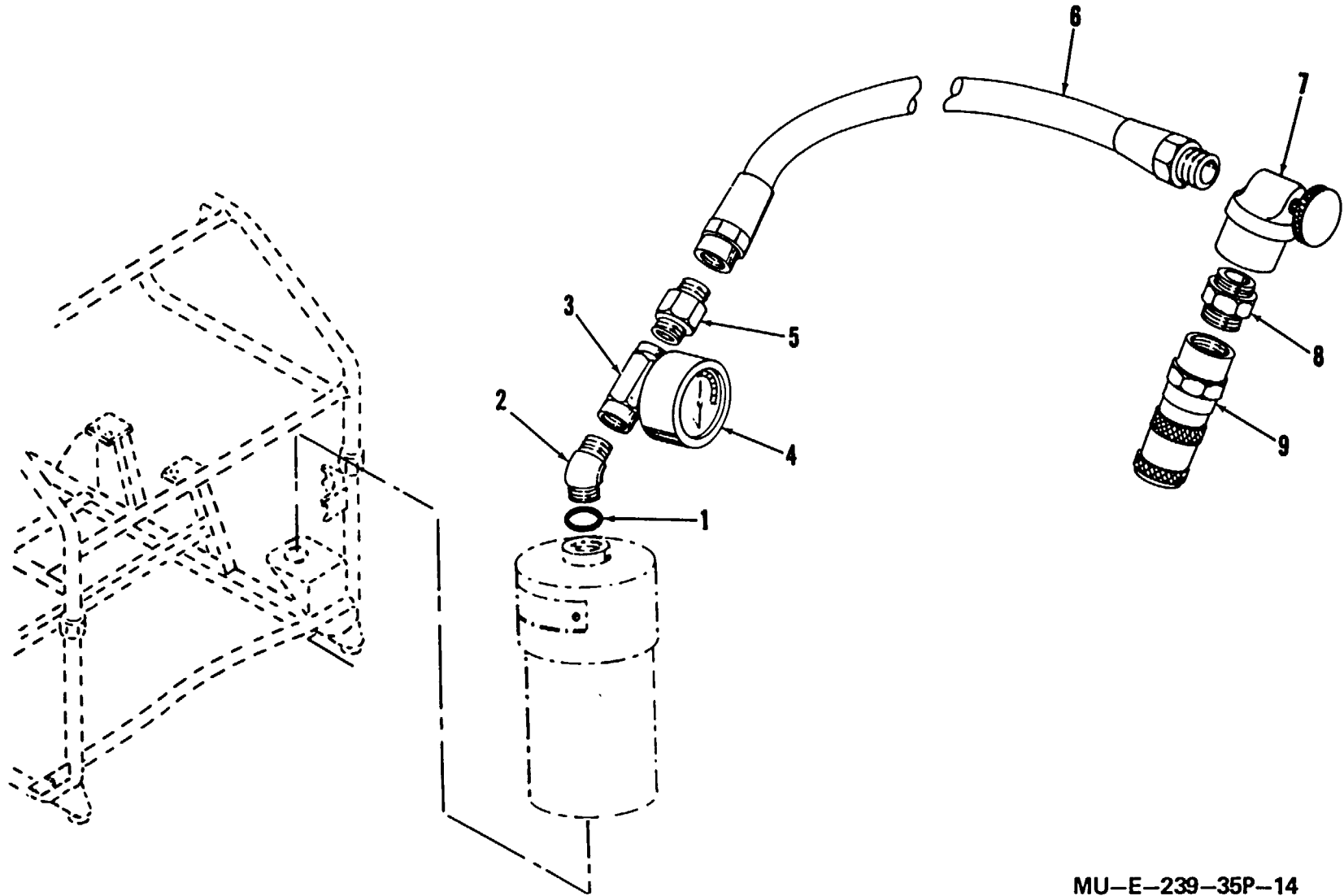


Figure 12. Engine accessories.



MU-E-239-35P-13

Figure 13. Frame and fuel tank.



MU-E-239-35P-14

Figure 14. Charging hose.

**Section IV. INDEX - FEDERAL STOCK NUMBER AND REFERENCE NUMBER
CROSS-REFERENCE TO FIGURE AND ITEM NUMBER**

<u>Stock Number</u>	<u>Figure No.</u>	<u>Item No.</u>	<u>Stock Number</u>	<u>Figure No.</u>	<u>Item No.</u>
1040-076-8849	9	2	1040-906-7901	4	15
1040-081-8079	13	15	1040-906-7902	9	8
1040-083-2606	1	1	1040-906-7905	7	13
1040-083-2607	1	3	1040-906-7906	7	14
1040-083-2608	1	9	1040-906-7909	4	16
1040-083-2614	1	7	1040-921-5291	13	1
1040-083-2617	3	5	1040-921-5294	7	17
1040-084-0436	12	6	1040-921-5295	10	7
1040-084-0438	2	16	1040-921-5296	10	6
1040-727-3731	4	11	1040-921-5297	12	9
1040-759-3895	9	9	1040-921-5298	13	13
1040-759-9767	9	4	1040-921-5299	3	4
1040-763-3254	13	2	1040-921-5300	3	9
1040-764-5948	5	6	1040-921-5301	10	1
1040-764-5949	5	2	1040-971-4920	11	11
1040-784-7455	4	12	1040-971-4921	11	9
1040-788-5373	4	4	1040-976-8980	13	26
1040-788-5374	-	-	1040-994-7985	13	9
1040-863-7451	1	4	1270-733-1322	6	2
1040-906-7899	2	14			

**Section IV. INDEX - FEDERAL STOCK NUMBER AND REFERENCE NUMBER
CROSS-REFERENCE TO FIGURE AND ITEM NUMBER**

<u>Stock Number</u>	<u>Figure No.</u>	<u>Item No.</u>	<u>Stock Number</u>	<u>Figure No.</u>	<u>Item No.</u>
1270-830-2836	3 6	3 3	4310-906-1008	9	18
2805-068-7510	11	5	4310-979-9284	6	6
2805-759-3894	9	16	4310-979-9287	8	15
2910-912-9485	13	9	4310-979-9288	8	14
2990-972-2318	11	2	4310-979-9289	8	13
3020-971-1366	11	6	4310-979-9294	8	11
3110-100-2394	9	7	4310-979-9295	6	22
3110-227-3181	9	11	4310-979-9296	7	19
3110-902-3397	9	11	4310-979-9299	-	-
3110-902-3398	9	7	4310-979-9300	-	-
3120-993-0093	4	13	4310-979-9301	-	-
4010-958-0633	13	23	4310-980-0664	9 3	13 1
4020-233-6555	1	8	4310-981-7579	6	1
4030-063-3979	13	25	4310-983-3072	4	5
4030-956-6126	13	22	4310-983-3075	7	8
4310-727-3736	8	20	4310-983-3076	6	7
4310-728-5126	4	3	4310-986-7764	6	21
4310-788-0907	8	23	4310-986-7766	4	14
4310-790-0954	8	9	4310-986-7767	8	16
4310-790-0985	8	24	4310-992-5746	9	8
4310-792-1491	5	1			

**Section IV. INDEX - FEDERAL STOCK NUMBER AND REFERENCE NUMBER
CROSS-REFERENCE TO FIGURE AND ITEM NUMBER**

<u>Stock Number</u>	<u>Figure No.</u>	<u>Item No.</u>	<u>Stock Number</u>	<u>Figure No.</u>	<u>Item No.</u>
4730-197-2916	6 8	7 1	5305-614-3423	4	8
4730-231-3026	2	20	5305-806-1800	8	18
4730-277-5083	6 7 8	8 9 2	5305-842-5646	4	20
4730-277-6372	2	9	5305-899-3002	4 9	1 12
4730-287-0092	10	3	5305-939-9190	11	1
4730-289-3070	13	12	5305-984-6211	10	5
4730-788-0902	2	8	5305-984-6215	8	6
4730-908-6292	2	15	5305-993-2459	13	17
4730-977-7663	2	12	5306-064-8407	11	10
4730-979-9281	7	17	5306-559-0474	9	13
4730-979-9296	7	19	5306-754-1787	2	4
4820-254-8640	12	8	5306-879-2800	1	2
4820-907-3448	2	13	5306-964-9603	4	9
5305-043-6749	2 12 13	2 1 3	5306-999-0488	4	17
5305-068-0500	11	7	5310-012-0379	9	14
5305-068-0507	13	20	5310-012-1753	11	8
5305-253-5609	9	3	5310-061-7325	1 13	6 16
5305-614-0246	10	11	5310-183-4406	8	8
			5310-194-0637	13	18
			5310-231-3026	2	20

**Section IV. INDEX - FEDERAL STOCK NUMBER AND REFERENCE NUMBER
CROSS-REFERENCE TO FIGURE AND ITEM NUMBER**

<u>Stock Number</u>	<u>Figure No.</u>	<u>Item No.</u>	<u>Stock Number</u>	<u>Figure No.</u>	<u>Item No.</u>
5310-270-8810	5 12	3 4	5315-727-1636	8	25
5310-275-3683	3	7	5315-788-5372	9	10
5310-282-7834	2	18	5320-999-0397	13	14
5310-543-5933	11	3	5330-171-5099	3	5
5310-550-9449	6 7 8 9	11 12 19 1	5330-186-1295	6 7 8	9 10 3
5310-559-0070	4 4	2 7	5330-186-4947	2	8
5310-576-5752	4 5 8 12	19 4 7 3	5330-263-8028	2	9
5310-596-7691	2	3	5330-263-8030	12	5
5310-596-7957	2 8 10 13	6 5 2 7	5330-263-8031	13	11
5310-616-3056	2	19	5330-265-1075	13	24
5310-788-0900	4	10	5330-582-7289	10	4
5310-809-8546	13	4	5330-727-2240	8	17
5310-849-7733	1	5	5330-788-0906	3	6
5310-877-5796	13	10	5330-988-8808	7	16
5310-934-9751	12	4	5330-993-0084	9	6
			5330-993-0085	9	17
			5330-999-0462	13	5
			5330-999-0478	7	15
			5330-999-0677	8	10
			5340-079-7837	12	2

**Section IV. INDEX - FEDERAL STOCK NUMBER AND REFERENCE NUMBER
CROSS-REFERENCE TO FIGURE AND ITEM NUMBER**

<u>Stock Number</u>	<u>Figure No.</u>	<u>Item No.</u>	<u>Stock Number</u>	<u>Figure No.</u>	<u>Item No.</u>
5340-205-6301	2	1			
5340-282-8335	13	6			
5340-285-7010	4	18			
5340-597-9408	13	8			
5340-769-5311	4	6			
5340-804-6855	8	21			
5340-977-7247	13	19			
5340-989-6774	6	5			
5340-989-6775	7	14			
5340-989-6776	8	12			
7690-728-5129	3	10			

**Section IV. INDEX - FEDERAL STOCK NUMBER AND REFERENCE NUMBER
CROSS-REFERENCE TO FIGURE AND ITEM NUMBER**

<u>Reference No.</u>	<u>Mfg Code</u>	<u>Fig No.</u>	<u>Item No.</u>	<u>Reference No.</u>	<u>Mfg Code</u>	<u>Fig No.</u>	<u>Item No.</u>
A2121	95138	2	12	B68-13-1567	81361	2	16
A68-13-1523	81361	13	19	B81-1-526	81361	13	25
A68-13-1528	81361	11	10	B81-1-6878	81361	1	2
A81-1-882	81361	13	22	C68-13-1572	81361	11	2
AN381-2-10	88044	6	14	D68-13-1551	81361	1	1
AN381-15-16	88044	6	15	D68-13-1570	81361	1	7
AN6289D6	88044	6	8	D81-1-6869-1	81361	1	3
AN6289-4	88044	2	9	D81-1-6872-1	81361	1	9
AN814-5D	88044	10	3	D81-1-6876	81361	1	4
AN833-4	88044	2	20	LP20074-03-03	03038	4	17
AN833-6D	88044	6	7	MIL-C-271	81349	13	23
AN837-6D	88044	7 8	18 1	MIL-C-2533	81349	1	8
AN911-1	88044	12	10	MS134355	96906	10	15
AN924-10D	88044	2	18	MS15795-311	96906	1	5
AN960PD10	88044	8	8	MS16625-4037	96906	8	21
B68-13-1532	81361	11	6	074-03-03	96906	2	4
B68-13-1540	81361	11	11	364-1032A	96906	2 8 13	6 5 7
B68-13-1541	81361	11	9	MS21044N4	96906	13	10
B68-13-1560	81361	13	26	MS21045-4	96906	13	16
B68-13-1566	81361	12	6	MS21318-13	96906	9	3

**Section IV. INDEX - FEDERAL STOCK NUMBER AND REFERENCE NUMBER
CROSS-REFERENCE TO FIGURE AND ITEM NUMBER**

<u>Reference No.</u>	<u>Mfg Code</u>	<u>Fig No.</u>	<u>Item No</u>	<u>Reference No.</u>	<u>Mfg Code</u>	<u>Fig No.</u>	<u>Item No.</u>
MS21333-67	96906	12	2	MS35226-62	96906	2	2
MS21919DG-4	96906	2	1			12	1
MS21919F8	96906	13	6	MS35265-43	96906	13	3
MS21919F10	96906	13	8	MS35265-69	96906	4	8
MS27183-8	96906	13	4	MS35266-63	96906	4	20
MS28777-4	96906	2	10	MS35275-265	96906	10	11
MS28777-6	96906	6	9	MS35292-32	96906	11	1
MS28783-6	96906	3	2	MS35333-38	96906	9	13
MS29512-04	96906	2	11			4	2
MS29512-08	96906	13	11	MS31333-39	96906	4	7
MS29512-6	96906	12	5			8	19
MS29513-218	96906	13	24	MS35333-73	96906	11	7
MS29561-013	96906	10	9	MS35335-3	96906	11	3
MS29561-127	96906	8	10	MS35335-32	96906	2	8
MS29561-217	96906	7	16	MS35335-40	96906	3	3
MS29561-229	96906	8	17	MS35335-41	96906	2	4
MS35206-242	96906	4	1	MS35337-26	96906	9	19
		9	12	MS35650-104	96906	5	14
MS35206-264	96906	10	5			11	3
MS35206-268	96906	8	6	MS35650-302	96906	12	4
MS35207-283	96906	13	17	M535842-14	96906	2	15
				MS9015-08	96906	13	12

**Section IV. INDEX - FEDERAL STOCK NUMBER AND REFERENCE NUMBER
CROSS-REFERENCE TO FIGURE AND ITEM NUMBER,**

<u>Reference No.</u>	<u>Mfg Code</u>	<u>Fig No.</u>	<u>Item No.</u>	<u>Reference No.</u>	<u>Mfg Code</u>	<u>Fig No.</u>	<u>Item No.</u>
MS90725-3	96906	11	7	3260124	78385	4	9
MS90726-7	96906	13	20	3260125	78385	4	13
MS9320-10	96906	13	18	3260127	78385	9	9
PA821-0604	92003	2	8	3260128	78385	7	3
Q3L05X3A	43334	9	7	3260129	78385	6	18
Q8279	78385	6	19	3260130	78385	6	13
QQ-A-250/11	81348	9	15	3260132	78385	4	14
1-AO-8-111	88408	11	5	3260133	78385	6	12
116-B100-14	78385	2	13	3260135	78385	8	9
11681-81N	30327	12	9	3260139	78385	8	24
130A0456	78385	10	4	320142	78385	8	20
130A457	57733	6	10	3260143	78385	8	23
130B2746	78385	6	1	3260144	57733	8	22
13081136	78385	6	21	3260146	78385	8	14
14812Q6	80201	9	17	3260147	78385	8	11
14830Q6	80201	9	6	3260148	78385	6	5
2740251	78385	6	2	3260149	78385	8	13
274103	78385	6	3	3260153	78385	8	25
305	28986	2	17	3260159	78385	7	17
				3260161	78385	7	14
3260123	78385	9	8	3260162	57733	6	16

**Section IV. INDEX - FEDERAL STOCK NUMBER AND REFERENCE NUMBER
CROSS-REFERENCE TO FIGURE AND ITEM NUMBER**

<u>Reference No.</u>	<u>Mfg Code</u>	<u>Fig No.</u>	<u>Item No.</u>	<u>Reference No.</u>	<u>Mfg Code</u>	<u>Fig No.</u>	<u>Item No.</u>
3260163	57733	6	17	3260566	78385	10	10
3260164	78385	8	15	3260569	78385	10	14
3260165	78385	8	16	3590175	78385	4	11
3260167	78385	5	5	3750231	78385	6	20
3260168	57733	9	10	3750345	78385	4	5
3260169	78385	7	8	3760100-4	78385	4	15
3260170	78385	6	22	3800178	78385	6	4
3260185	78385	4	6	3800195	78385	6	6
3260188	57733	9	5	3800196	78385	8	12
3260220	78385	9	16	3811000	78385	2	14
3260240	78385	9	18	3811021	78385	3	6
3260243	78385	4	12	3811022	78385	3	1
3260265	78385	10	13	407-0271	78385	13	21
3260281	78385	9	4	412-0093	78385	9	8
3260299	78385	9	2	425-0124	78385	7	14
3260390	78385	4	3	434-0167	78385	13	15
3260391	78385	3	7	434-0230	78385	13	15
3260424	78385	5	1	434-0233	78385	13	2
3260548	57733	4	4	4407-0058	78385	13	13
3260551	78385	2	7	4408-0054	78385	7	17
3260556	78385	10	12	4417-0013	78385	9	18

**Section IV. INDEX - FEDERAL STOCK NUMBER AND REFERENCE NUMBER
CROSS-REFERENCE TO FIGURE AND ITEM NUMBER**

<u>Reference No.</u>	<u>Mfg Code</u>	<u>Fig No</u>	<u>Item No.</u>	<u>Reference No.</u>	<u>Mfg Code</u>	<u>Fig No.</u>	<u>Item No.</u>
4421-0021	78385	7	19	742d6	88044	4	18
4428-0167	78385	4	16	803831	33525	12	7
4455-0017	78385	10	1	8599621-330	99974	8	18
4455-0020	78385	5	2	873561	33525	3	5
4455-0021	78385	5	6				
4457-0016	78385	13	9				
448-0480	78385	10	16				
448-0483	78385	7	15				
448-0507	78385	13	5				
457-0023	78385	10	6				
465-0118	78385	7	13				
48A113	78385	3	3				
50FK420	56878	6	11				
500592	10001	12	9				
52TE126	33525	4	10				
614-0014	78385	9	7				
614-0015	78385	9	11				
628-0015	78385	12	8				
628-0041	78385	10	7				
6480042-1	78385	17	14				

By Order of the Secretary of the Army:

Official:

W. C. WESTMORELAND,
General, United States Army,
Chief of Staff.

KENNETH G. WICKHAM,
Major General, United States Army,
The Adjutant General.

Distribution:

Active Army:

CNGB (1)
USAMB (2)
USAMC (5)
USAMUCOM (5)
USACDC (2)
USACDCEC (10)
USACDC Agy (2)
USCONARC (10)
ARADCOM (6)
ARADCOM Rgn (5)
OS Maj Comd (5)
Armies (5)
Corps (3)
Div (3)
Instl (2) except
 USAECFB (4)
USMA (10)
Svc Colleges (10)
Br Svc Sch (10) except
 USACMLCS (50)
Gen Dep (5)
Dep (5)
Army Dep (5)
USAARMC (2)
USAFACFS (2)
USAMMCS (2)
USAIC (2)
POE (1)
EAMTMTS (1)
WAMTMTS (1)
PG (5)
USAAPSA (5)

Arsenals (3) except
 Edgewood (50)
 Ft Knox FLDMS (10)
Units org under fol TOE: 3 ea. UNOINDC
3-7
3-32
3-36
3-47
3-117
3-147
3-500
29-1
29-11
29-15
29-17 (1)
29-21
29-25
29-27 (1)
29-35
29-37(1)
29-45
29-51
29-55
29-56 (1)
29-57 (1)
29-75
29-79 (1)
29-105
29-106
29-109
29-500

ARNG: State AG (3); Div (1).

USAR: Same as Active Army except allowance is one (1) copy each.

For explanation of abbreviations used, see AR 310-50.

TM 3-1040-244-35P

PIN: 024674-000